

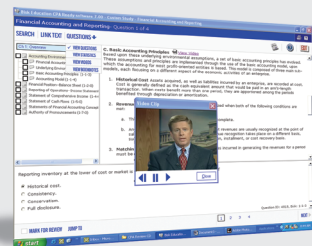
GENERAL FEATURES

- Center-based navigation
- Expanded help system
- Home page with history links
- Increased settings options (including customizable content appearance)
- "Getting Started" section
- Tutorial-based help system
- Ability to print every screen
- Audio help for all screens
- Web-based interface

STATISTICS FEATURES

- Color-coded statistical analysis by topic and microtopic
- Statistical charts compare all exams taken
- Statistics saved for every question and exam taken
- Summary details for all areas of study

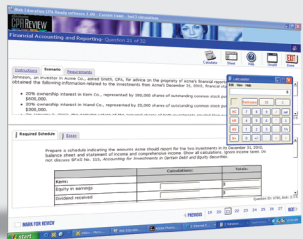
STUDY FEATURES



50 HOURS OF STREAMING VIDEO

- Hundreds of simulation questions
- Bisk Personal Trainer™ (develops a personalized study plan based on study exam performance)
- More than 4,000 actual CPA exam questions
- Ability to mark questions for later reference
- Thousands of pages of embedded text from our four-volume textbook series
- Recently visited areas
- Custom study (user chooses what to study)
- Global study (study any topic instantly)
- Study mode with correct and incorrect answer explanations
- Super search
- Weekly assignments
- Study guides included
- Lecture viewer guides
- 50+ hours of streaming video lectures
- Supplemental examples help explain difficult concepts

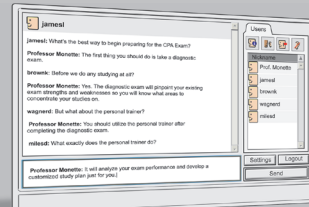
TEST FEATURES



UNLIMITED FINAL EXAMS

- Test advisor (guides you through the test-taking process and recommends specific custom tests)
- Unlimited AICPA-based final exams, unique and timed
- More than 4,000 actual CPA exam questions including case-based simulations
- Mirrors the actual exam
- Questions chosen and weighted from topics based on the CPA exam
- Ability to mark questions for later reference
- AICPA final exam chart

ONLINE COMMUNICATION FEATURES



BETTER THAN LIVE

- Message boards for threaded discussions*
- Weekly chat sessions with your professor*
- Email interaction for one-on-one communication*
- Class news to keep you up to date*

MORE THAN 4,000 PRACTICE QUESTIONS!

- AVAILABLE BY SECTION OR COMPLETE SET
- Financial Accounting & Reporting
 - Auditing & Attestation
 - Regulation
 - Business Environment & Concepts

GET READY TO **PASS** THE CPA EXAM 100% ONLINE

APPROVED CPA REVIEW PROVIDER FOR



UNIVERSITY OF SOUTH FLORIDA

SPECIAL \$500 SAVINGS TO USF STUDENTS & ALUMNI For All 4 Review Sections

Visit USF.CPAexam.com



Bisk CPA Review ONLINE

CLASSROOM SCHEDULE 2011-2012

NEW AGREEMENT ENSURES YOU'LL PASS THE FIRST TIME!*

Bisk CPA Review, the most comprehensive online CPA review available, is now the University of South Florida's approved provider for CPA review materials. Access a full array of proven benefits, including tips and techniques from premier CPA exam experts, innovative tools, a flexible online classroom environment and other features.

As a USF student or alumnus, you will enjoy **special savings of \$500** when you buy all four sections of Bisk CPA Review at the low price of \$1,485. Or select only the sections that are right for you at just \$372 each. Either way, you will enjoy convenient online access as well as handy textbooks for all sections. What's more, you'll receive our **money-back guarantee**: If you do not pass the CPA exam on your first attempt after studying with and successfully completing

one of our exam preparation packages, we will refund your full product purchase price, or update your materials free of charge. Certain restrictions and preparation requirements apply.

Complete our easy self-registration for Bisk CPA Review now at USF.CPAexam.com. If you have any questions, please call 800-874-0540, ext. 4380.

SEEK A SCHOLARSHIP!

USF is awarding accounting scholarships on the basis of academic achievement. Apply today!

Application deadlines may vary. Contact the School of Accountancy at 813-974-4186 for details.

*Call for details.

MEET THE FACULTY

Financial Accounting and Reporting (FAR)

MARC A. GIULLIAN, PhD, CPA, is an Assistant Professor at Montana State University – Bozeman. He teaches financial accounting at both the undergraduate and graduate levels. Prior to his work at MSU, he was on the faculty of the University of Louisiana – Lafayette for six years. Dr. Giullian has a bachelor's and master's degree from Brigham Young University and a PhD from the University of Illinois at Urbana – Champaign. Dr. Giullian has been teaching CPA review for over ten years and has been an online faculty advisor for FAR since the online course was first introduced.

Regulation (REG)

GARY A. H. LAURSEN, JD, LL.M. (Taxation), CPA (FL), Board Certified Tax Lawyer (FL), is a full-time, tenured Associate Professor of Accounting and Law in the School of Accountancy at the University of South Florida in Tampa, Florida. Dr. Laursen does consulting in the areas of Estate Planning, Probate Administration and Income Tax Planning. He received his law degrees from the University of Miami School of Law, and his accounting degree from Florida State University. Dr. Laursen has taught CPA review courses in the Tampa Bay area since 1973.

Auditing and Attestation (AUD)

KO HSU, PhD, CPA (IL), is an Associate Professor at the University of South Alabama in Mobile. He has taught both auditing and accounting information systems for more than 10 years. Dr. Hsu received his PhD from the University of Mobile and has published numerous articles in professional and academic journals. Dr. Hsu is a member of the American Accounting Association and the AICPA.

Business Environment and Concepts (BEC)

SHARIE T. DOW, MST, CPA, earned her MS in Taxation from Bentley College in 1992 and her BS in Accounting and Management from Franklin Pierce College in 1989. Dow co-authored *Tax Strategies for the Self-Employed*, published by CCH Incorporated in 2001, and the *Study Guide to Accompany Cost Accounting*, fourth edition, by Barfield, Raiborn and Kinney, in 2001. Her academic experience includes previous teaching as an adjunct Professor of Accounting at Saint Leo University Center for Online Learning. Dow is a CPA in the states of Florida, New Hampshire and Massachusetts. She has over 10 years experience in industry and public accounting and is a member of the AICPA and FICPA.

Bisk CPA Review will be presented in professor-led online sessions throughout the coming year. After you decide when you want to sit for the exam, select the most convenient session for you from the choices below.

APRIL/MAY 2011 Exam Window (New Content Specification Outline)	
SESSION 1: REG, BEC, FAR OR AUD – Enrollment Deadline January 21, 2011	
Site Access Opens:	January 24, 2011
Professor Instruction Begins:	January 24, 2011
Professor Instruction Ends:	March 13, 2011
Site Access Closes:	May 31, 2011
SESSION 2: REG, BEC, FAR OR AUD – Enrollment Deadline February 25, 2011	
Site Access Opens:	January 24, 2011
Professor Instruction Begins:	February 28, 2011
Professor Instruction Ends:	April 17, 2011
Site Access Closes:	May 31, 2011

JULY/AUGUST 2011 Exam Window (New Content Specification Outline)	
SESSION 1: REG, BEC, FAR OR AUD – Enrollment Deadline April 22, 2011	
Site Access Opens:	April 25, 2011
Professor Instruction Begins:	April 25, 2011
Professor Instruction Ends:	June 12, 2011
Site Access Closes:	August 31, 2011
SESSION 2: REG, BEC, FAR OR AUD – Enrollment Deadline May 20, 2011	
Site Access Opens:	April 25, 2011
Professor Instruction Begins:	May 23, 2011
Professor Instruction Ends:	July 10, 2011
Site Access Closes:	August 31, 2011

OCTOBER/NOVEMBER 2011 Exam Window (New Content Specification Outline)	
SESSION 1: REG, BEC, FAR OR AUD – Enrollment Deadline July 22, 2011	
Site Access Opens:	July 25, 2011
Professor Instruction Begins:	July 25, 2011
Professor Instruction Ends:	September 11, 2011
Site Access Closes:	November 30, 2011
SESSION 2: REG, BEC, FAR OR AUD – Enrollment Deadline August 26, 2011	
Site Access Opens:	July 25, 2011
Professor Instruction Begins:	August 28, 2011
Professor Instruction Ends:	October 16, 2011
Site Access Closes:	November 30, 2011

JANUARY/FEBRUARY 2012 Exam Window (New Content Specification Outline)	
SESSION 1: REG, BEC, FAR OR AUD – Enrollment Deadline October 21, 2011	
Site Access Opens:	October 24, 2011
Professor Instruction Begins:	October 24, 2011
Professor Instruction Ends:	December 11, 2011
Site Access Closes:	February 29, 2012
SESSION 2: REG, BEC, FAR OR AUD – Enrollment Deadline November 23, 2011	
Site Access Opens:	October 24, 2011
Professor Instruction Begins:	November 25, 2011
Professor Instruction Ends:	January 15, 2012
Site Access Closes:	February 29, 2012

Need more flexibility in your start dates or a non-Internet-based program? Start anytime with the Bisk CPA Review Classic program. The Classic package includes a 4-volume set of comprehensive CPA Review textbooks, 4-section set of multimedia software, 50+ hours of video lecture CDs, and a 4-volume set of workbooks that include weekly assignments to help you stay on track. Self-register for either program at USF.CPAexam.com.

COMPREHENSIVE EXAM REVIEW
PREPARE AND PASS
TAKE YOUR FIRST STEP TODAY | Visit USF.CPAexam.com
SELF-REGISTER NOW!