

Level VI (B, M, ES, D), Research Institutions with Multiple Campuses that are Regionally Accredited by the Southern Association of Colleges and Schools, Commission on Colleges:

Academic Leadership, College Structure, and Performance Accountability

Florida Atlantic University (Boca Raton [main campus], Dania Beach, Davie, Fort Lauderdale, Harbor Branch, Jupiter)

Florida International University (University Park [main campus], Biscayne Bay)

Florida State University (Tallahassee [main campus], Panama City)

George Mason University (Fairfax [main campus], Arlington, Science & Technology, Loudoun)

Georgia State University (Atlanta [main campus], Perimeter, Alpharetta, Decatur, Clarkston, Dunwoody, Newton)

Mississippi State University (Starkville [main campus], Meridian)

University of Georgia (Athens [main campus], Griffin, Gwinnett, Tifton, Buckhead)

Florida Preeminent State Research Universities that are Regionally Accredited by the Southern Association of Colleges and Schools, Commission on Colleges:

Academic Leadership, College Structure, and Performance Accountability

Florida State University (Tallahassee [main campus], Panama City)

University of Florida (Gainesville [main campus], UF Online, Extension)

USF (Tampa [main campus])

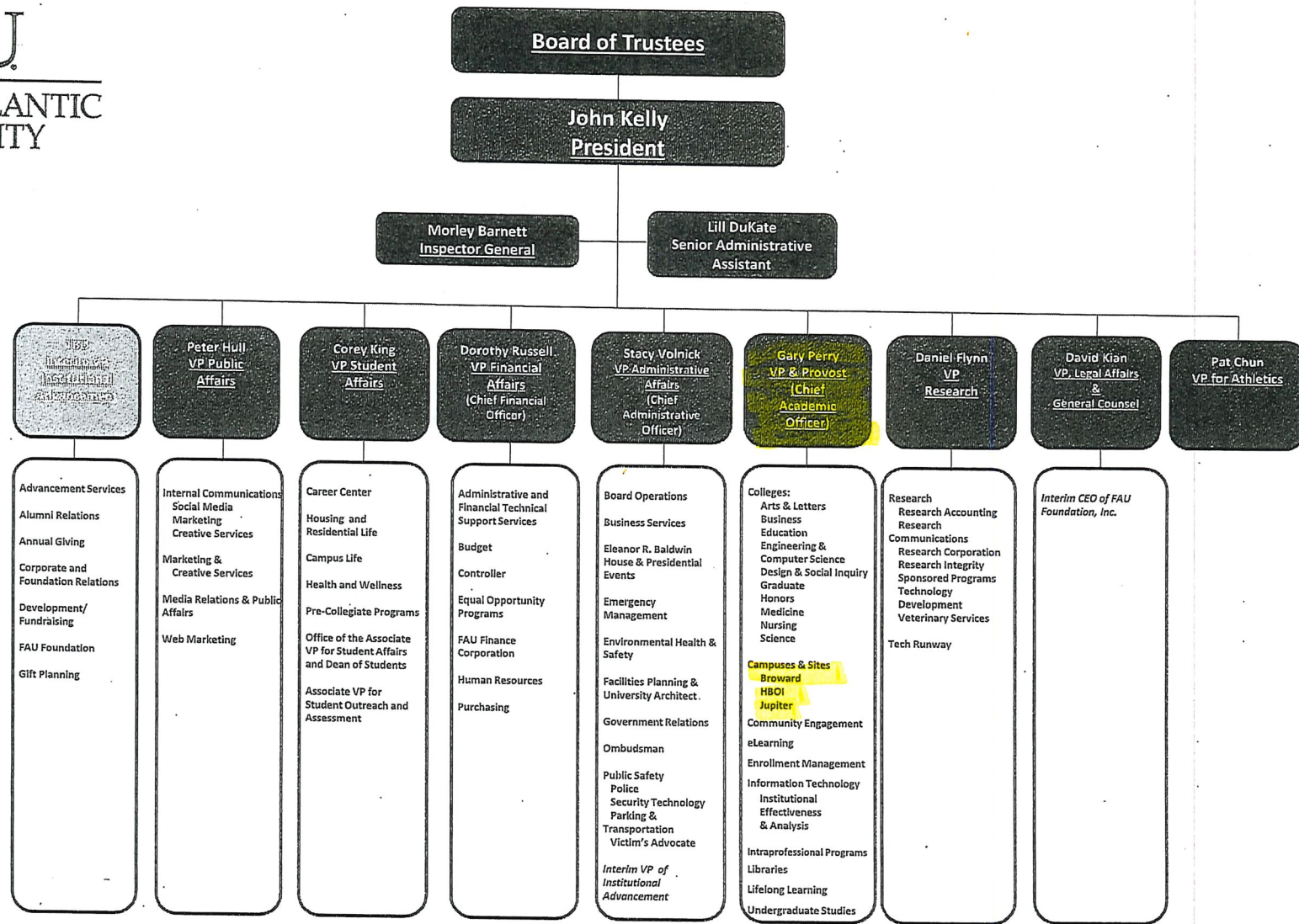
USF System – 3 Separately-Accredited Institutions (1 x Level VI, and 2 x Level III) that are Regionally Accredited by the Southern Association of Colleges and Schools, Commission on Colleges (today):



Academic Leadership, College Structure, and Performance Accountability

USF Tampa (Level VI)

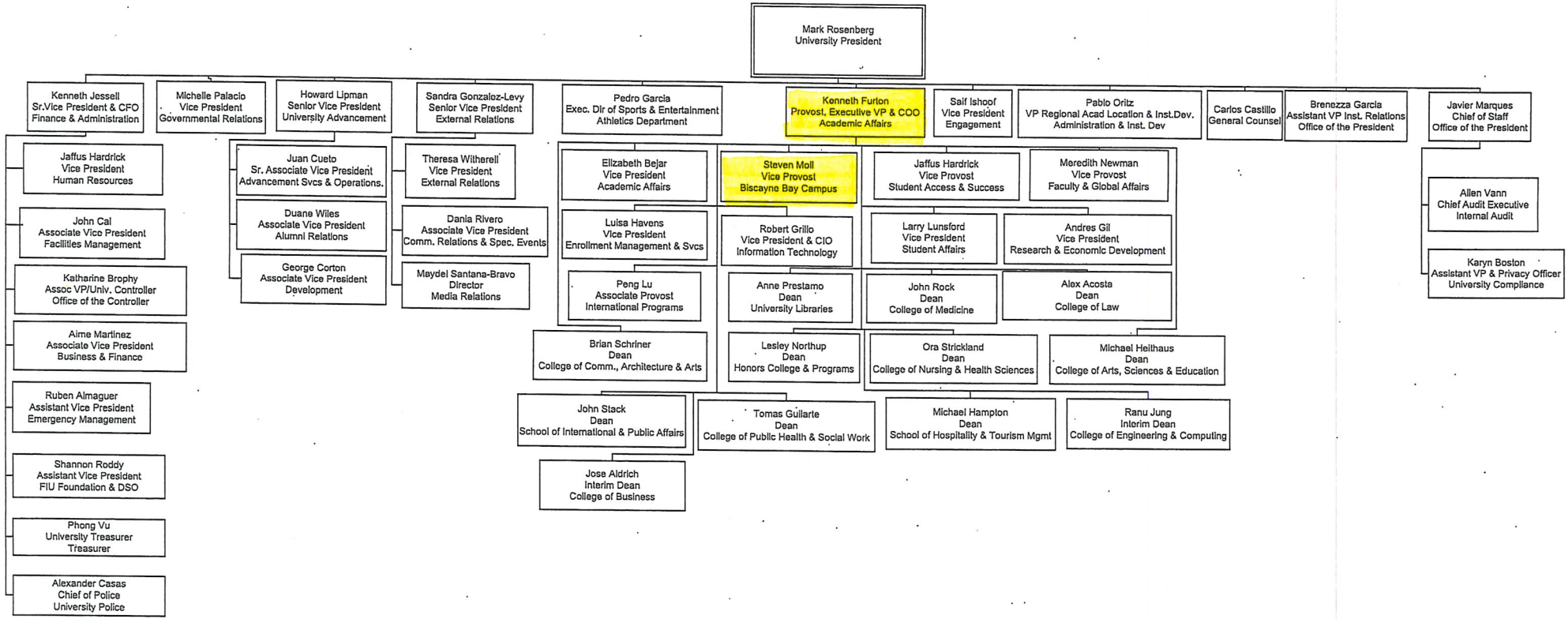
USF St. Petersburg (Level III)

USF Sarasota-Manatee (Level III)



 = Executive Leadership Team
 = Interim

April 4, 2017



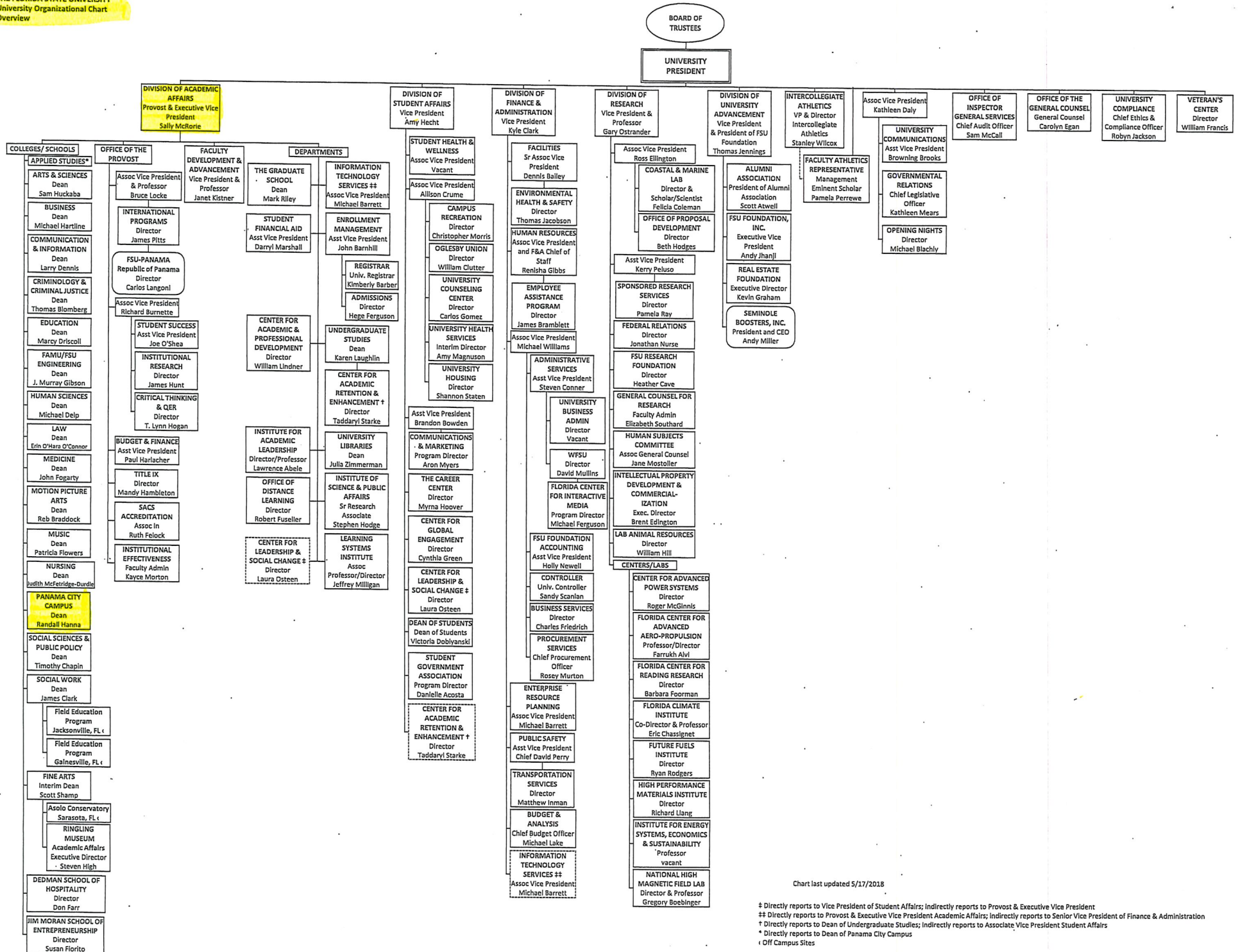
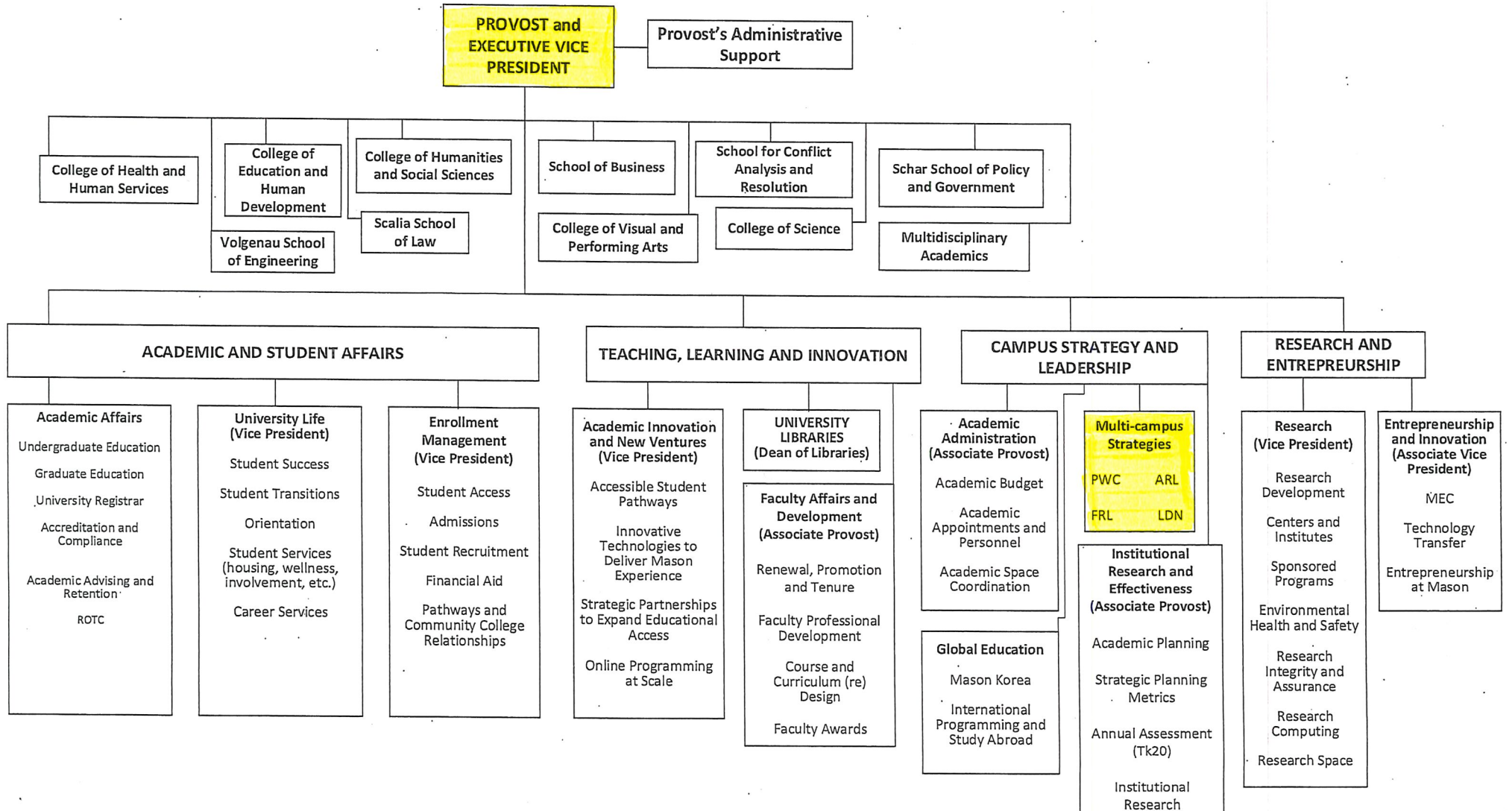
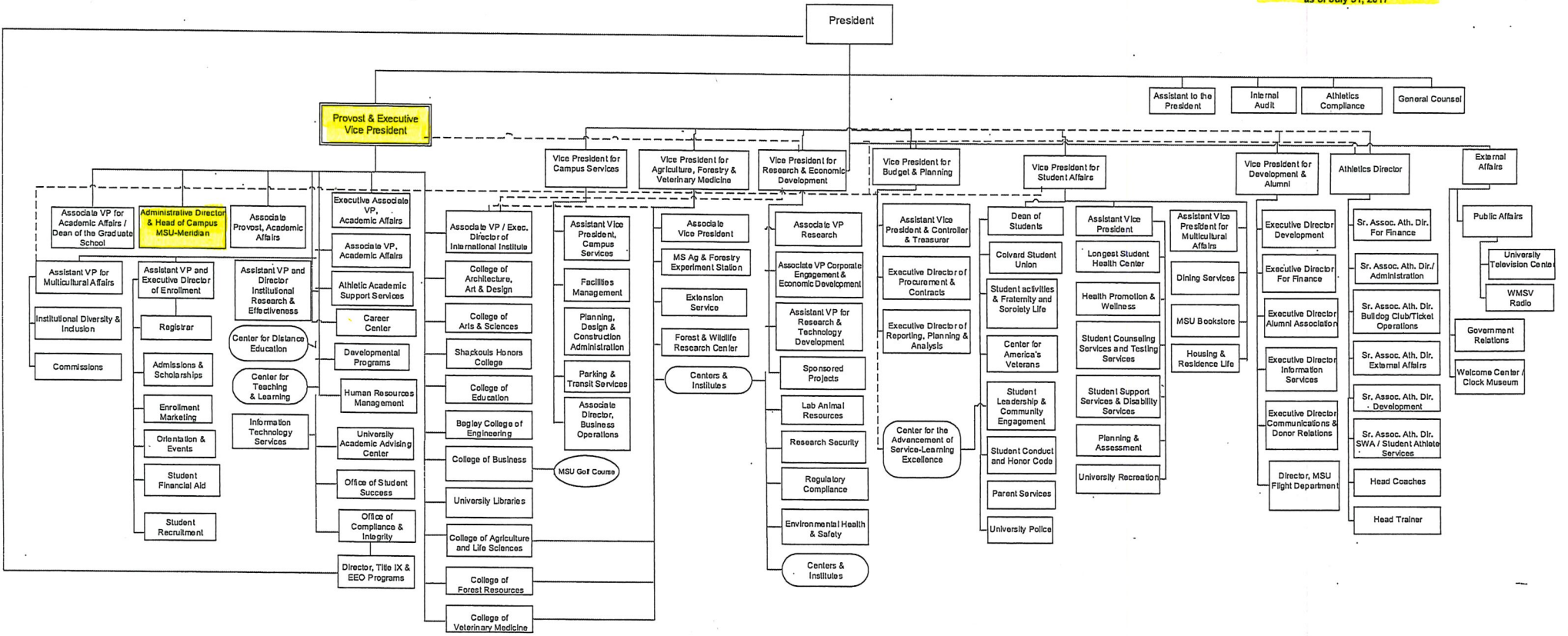


Chart last updated 5/17/2018

‡ Directly reports to Vice President of Student Affairs; Indirectly reports to Provost & Executive Vice President
 ‡‡ Directly reports to Provost & Executive Vice President Academic Affairs; Indirectly reports to Senior Vice President of Finance & Administration
 † Directly reports to Dean of Undergraduate Studies; Indirectly reports to Associate Vice President Student Affairs
 † Directly reports to Dean of Panama City Campus
 † Off Campus Sites

ORGANIZATIONAL STRUCTURE



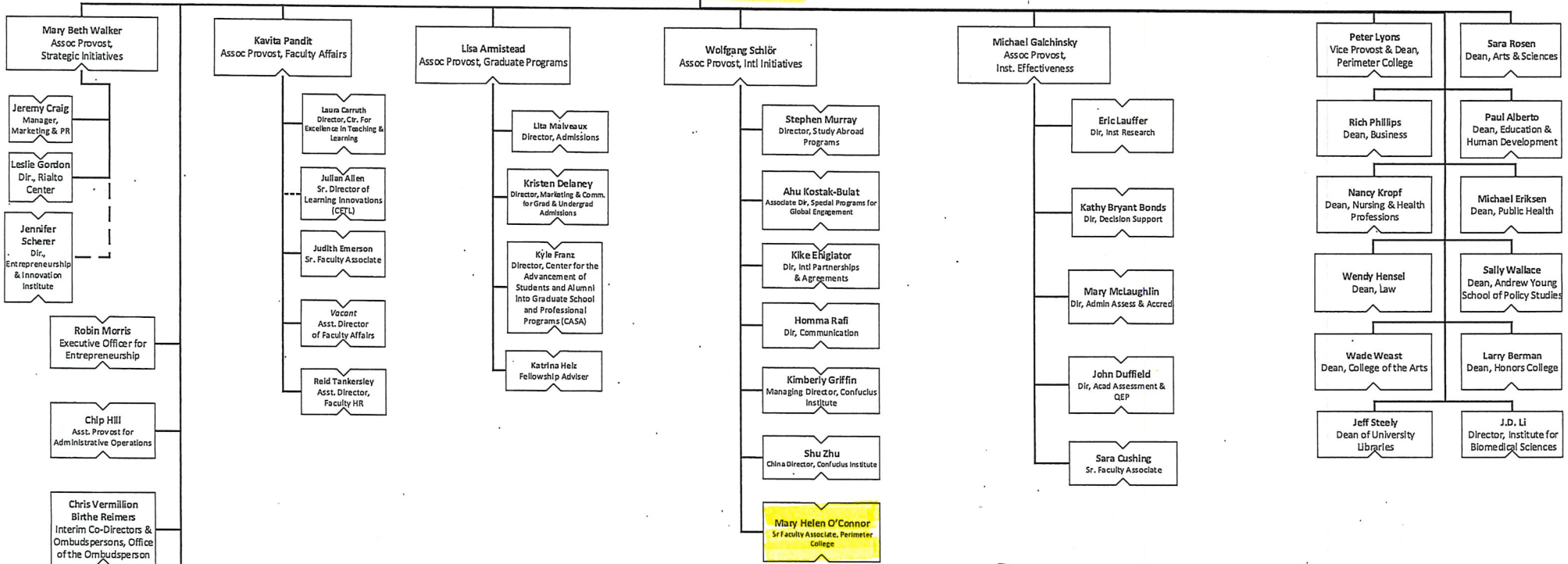


Office of the Provost
Georgia State University

Rev. 11-19-18 jsc

Risa Palm
Sr VP for Academic Affairs & Provost

Rae Borden
Administrative Director to
the Provost



Senior Vice President for Academic Affairs & Provost
Libby V. Morris (interim)

Vice Provost for Academic Affairs
Russell Mumper

Vice Provost for Diversity & Inclusion & Strategic University Initiatives
Michelle Cook

Assistant to the Provost
Will Richardson

Director of Public Relations
Sam Fahmy

Admin Specialist II
Stacia Fink

Public Relations Coordinator
Camie Williams

Admin Specialist I
Michael Frye

Academic Affairs Vice Presidents

Vice President for Instruction
Rahul Shrivastav

Vice President for Research
David C. Lee

Vice President for Public Service & Outreach
Jennifer Frum

Vice President for Student Affairs
Victor K. Wilson

Associate Provosts

Associate Provost for Academic Fiscal Affairs
Christina J. Miller

Associate Provost & Director, Honors Program
David S. Williams

Associate Provost for International Education
Noel Fallows

University Librarian & Associate Provost
Toby Graham

Associate Provost for Faculty Affairs
Sarah Covert

Deans of Colleges and Schools

College of Agricultural & Environmental Sciences
Samuel Pardue

Franklin College of Arts and Sciences
Alan T. Dorsey

Terry College of Business
Benjamin C. Ayers

Odum School of Ecology
John L. Gittleman

College of Education
Denise Spangler

College of Engineering
Donald J. Leo

College of Environment & Design
Sonia Hirt

College of Family & Consumer Sciences
Linda K. Fox

Warnell School of Forestry & Natural Resources
Dale Greene

Grady College of Journalism & Mass Communication
Charles N. Davis

School of Law
Peter "Bo" Rutledge

College of Pharmacy
Svein Øie

College of Public Health
Marsha Davis (interim)

School of Public & International Affairs
Matthew Auer

School of Social Work
Anna Scheyett

College of Veterinary Medicine
Lisa K. Nolan

Campus Dean, AU/UGA Medical Partnership
Shelley A. Nuss

Graduate School
Suzanne Barbour

Georgia Museum of Art
William J. Eiland

Institute of Higher Education
James C. Hearn (interim)

Performing Arts Center
Jeffrey Q. Martin

Skidaway Institute of Oceanography
Clark Alexander

Accreditation and Institutional Effectiveness
Allan Aycock

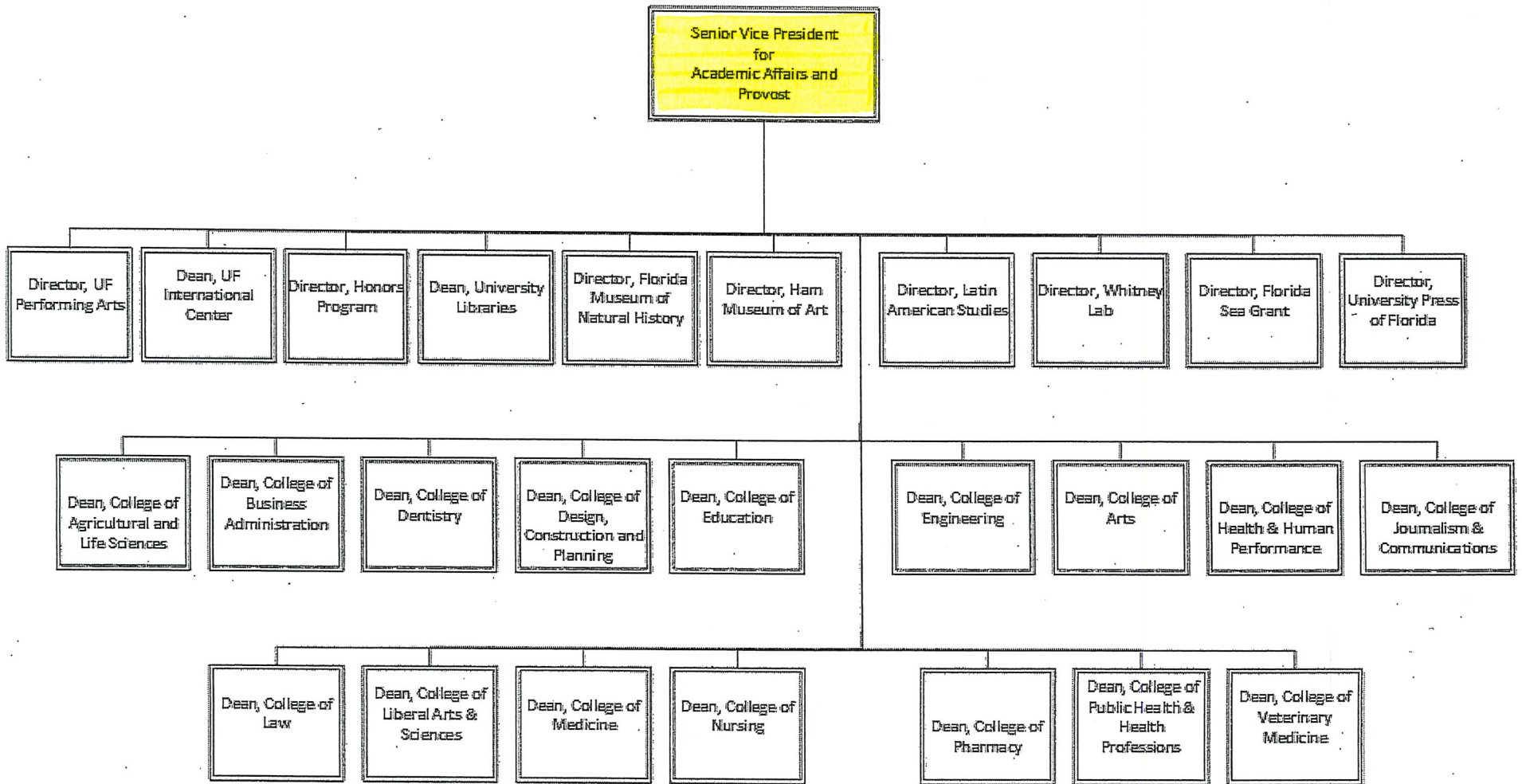
Assistant Provost and Campus Director of Griffin Campus
Lew K. Hunnicutt

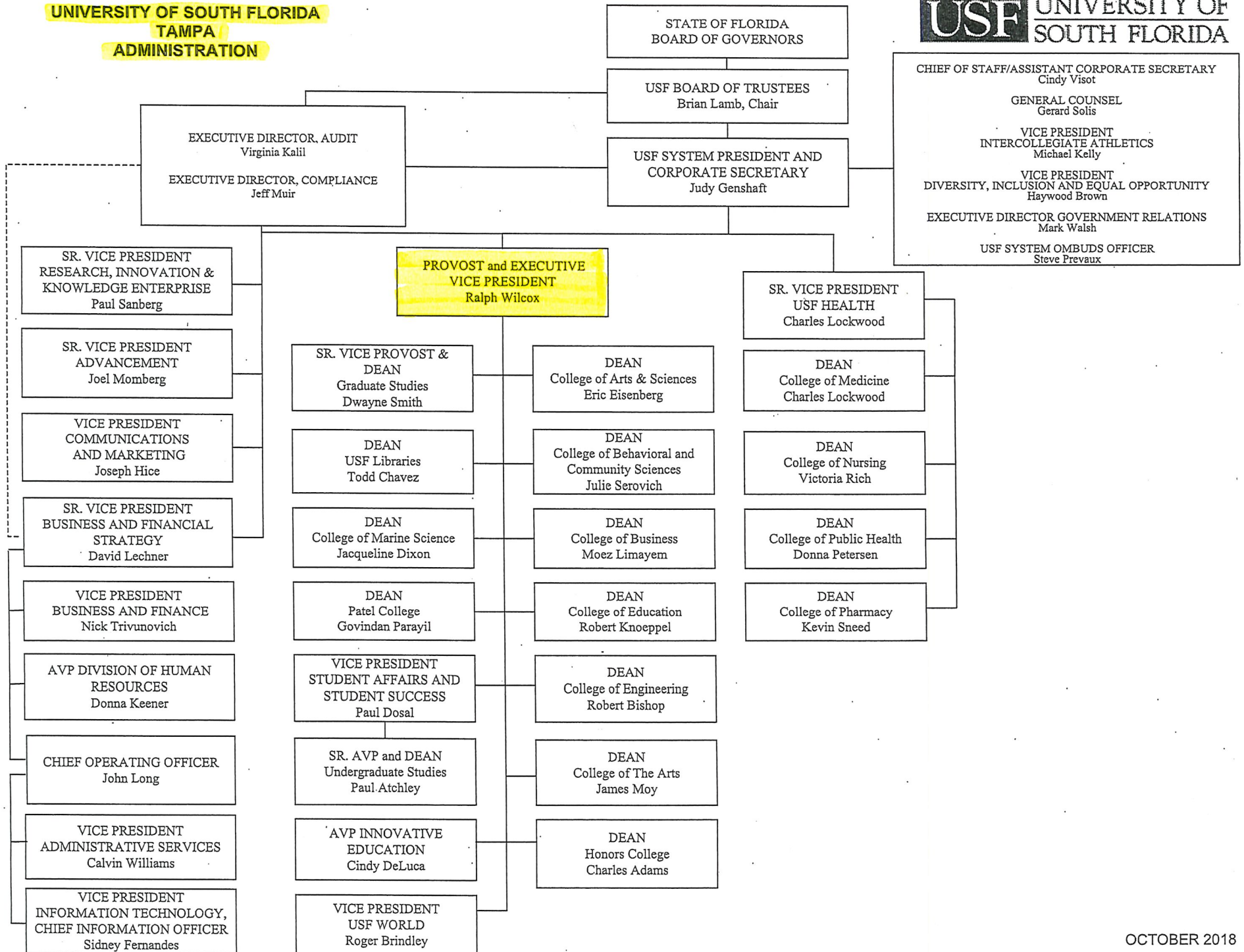
Reports jointly to the Provost and the Dean of CAES



University of Florida Organization Chart

Senior Vice President for Academic Affairs and Provost





CHIEF OF STAFF/ASSISTANT CORPORATE SECRETARY
Cindy Visot

GENERAL COUNSEL
Gerard Solis

VICE PRESIDENT INTERCOLLEGIATE ATHLETICS
Michael Kelly

VICE PRESIDENT DIVERSITY, INCLUSION AND EQUAL OPPORTUNITY
Haywood Brown

EXECUTIVE DIRECTOR GOVERNMENT RELATIONS
Mark Walsh

USF SYSTEM OMBUDS OFFICER
Steve Prevaux

