

Subject Matter Expert Showcase

Criminal Justice, Mental Health, and Substance Abuse
Technical Assistance Center

June 5, 2024





UNIVERSITY of
SOUTH FLORIDA

College of Behavioral & Community Sciences

Criminal Justice, Mental Health, and
Substance Abuse Technical Assistance Center

Webinar Agenda

- Welcome, Introductions, and Center Updates
 - Abby Shockley, MPH, CPH, CJMHSA TAC Director
- SME Showcase
 - Abby Shockley, MPH, CPH, TAC Director
 - M. Scott Young, PhD, Research Associate Professor, MHLPP, USF
 - Cindy A. Schwartz, MS, MBA, Subject Matter Expert
 - Michele Merritt, JD, President, New Futures
- Q&A

Abby Shockley, MPH, CPH

Areas of Expertise



- Substance Use Disorders (SUD)
 - Policy analysis and development
 - Opioid response (program development for delivering BH services)
 - Medication Assisted Treatment (MAT)
- Medicaid
- Sequential Intercept Model
- Strategic planning
- Grant writing
- Behavioral Health Parity Law
- Cross-system collaboration, integrated care
- Recovery Community Organizations/Mental Health Clubhouse Models
- Federal and State compliance monitoring

Dr. M. Scott Young

Introduction

- Research Associate Professor in the College of Behavioral and Community Sciences, Department of Mental Health Law and Policy, University of South Florida

Dr. M. Scott Young

Areas of Expertise



Data-Focused Areas

- Data analysis
- Needs assessment
- Program evaluation

Other Content Areas

- Criminal justice diversion programs
 - Drug courts (e.g., adult, juvenile, opiates, gender-sensitive)
 - Mental health courts
 - Veterans' courts
 - Police and mental health collaborative diversion programs
- Low Demand housing programs for individuals who cannot, or will not, stop using substances
 - VA-funded Safe Havens and Low Demand Grant and Per Diem (GPD) programs

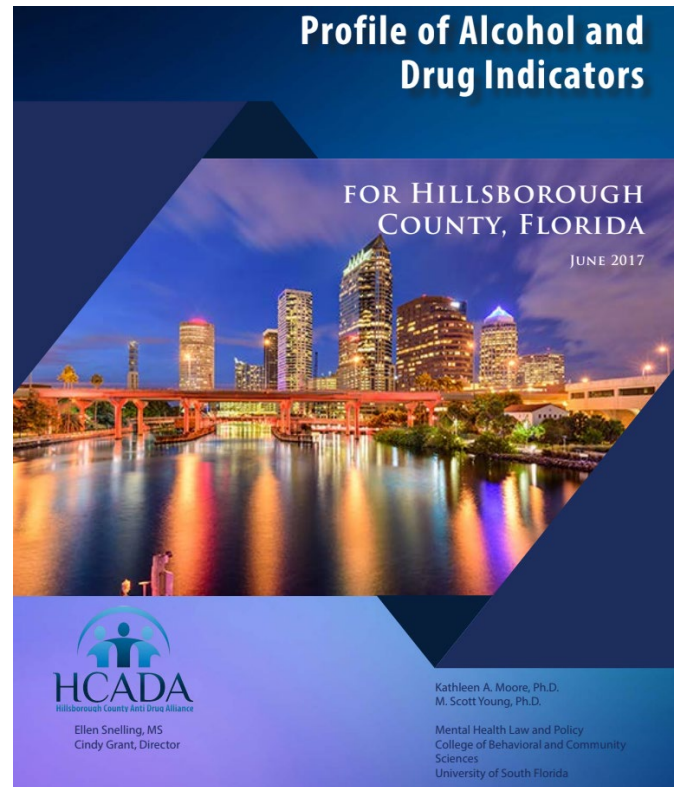
Technical Assistance Focused on Data

- Data Sets Available to the TA Center
 - Baker Act data
 - DCF substance abuse and mental health provider service and outcome data
 - Department of Corrections, on a case-by-case basis, upon formal requests and DOC approvals
 - Publicly available data sets describing your local community (census, health rankings, local health needs assessments, etc.)
- Procedures
 - Requests are to be made to USF in advance
 - USF may need to get approvals from data set owners, on case-by-case basis

Common Purposes of Data-Focused TA

- Needs Assessment
- Grant Planning
- Decision Making
- Targeting
- County-Level Indicator Reports

**Note that these activities can assist when preparing grant applications and/or once programs are funded.*



Data-Focused TA: Available Data

- Additional Examples of Publicly Available County-Level Data Sets
 - Florida Youth Substance Abuse Survey (FYSAS)
 - Florida Youth Tobacco Survey (FYTS)
 - Measures for Justice
 - County Health Rankings and Roadmaps
 - Census Data

FYSAS

Table 22. Family job loss and student emotional health during the COVID-19 pandemic among Hillsborough County and Florida Statewide youth, 2022

	Hillsborough County							Florida Statewide						
	Middle School	High School	Female	Male	Ages 10-14	Ages 15-17	Total	Middle School	High School	Female	Male	Ages 10-14	Ages 15-17	Total
<i>Did a parent or other adult in the home lose their job or have hours reduced during the COVID-19 pandemic?</i>														
Yes	63.9	64.8	62.1	67.0	64.4	64.1	64.5	63.6	62.9	60.3	66.4	63.4	63.1	63.2
No	27.4	29.2	32.0	24.7	26.7	30.4	28.4	25.1	30.0	30.5	25.1	25.4	29.8	27.9
No adult had a job	8.7	6.0	5.9	8.4	8.9	5.5	7.1	11.4	7.0	9.2	8.5	11.1	7.0	8.9
<i>How has your emotional health (level of stress, anxiety, and depression) changed during the COVID-19 pandemic?</i>														
A lot better	24.5	17.7	15.2	25.7	24.6	15.8	20.6	19.5	16.5	13.2	22.4	18.8	16.7	17.8
A little better	8.6	10.8	10.5	9.5	9.4	10.3	9.9	10.2	10.7	10.3	10.6	10.1	10.7	10.5
About the same	30.1	26.7	22.4	33.6	28.8	28.2	28.1	31.1	29.0	23.6	36.6	31.2	28.6	29.9
A little worse	21.9	27.4	28.8	21.4	22.1	28.0	25.0	22.5	24.8	28.4	19.4	22.8	24.7	23.8
A lot worse	15.0	17.4	23.1	9.8	15.1	17.8	16.4	16.7	19.0	24.6	11.0	17.2	19.3	18.0

Note: Percentages total to 100% down each column for each survey question. Rounding can produce totals that do not equal 100%.

<https://www.myflfamilies.com/services/samh/2022-florida-youth-substance-abuse-survey>

FYTS

Florida Youth Tobacco Survey Data

[View Report](#)

The data about **Students Who Have Ever Been Diagnosed With Asthma (FYTS)** come from the Florida Youth Tobacco Survey (FYTS). FYTS tracks indicators of tobacco use and exposure to secondhand smoke among Florida public middle and high school students and provides data for monitoring and evaluating tobacco use among youth. **In Florida, the FYTS data is collected at the state level each year, and it is collected at the county level every other year.**

Since behaviors impact health, this knowledge is a powerful tool for targeting and building health promotion activities. It also provides a way to see change in population health behaviors before morbidity or disease is apparent.

Select Category:

Asthma

Select Indicator:

Students Who Have Ever Been Diagnosed With A

Select County:

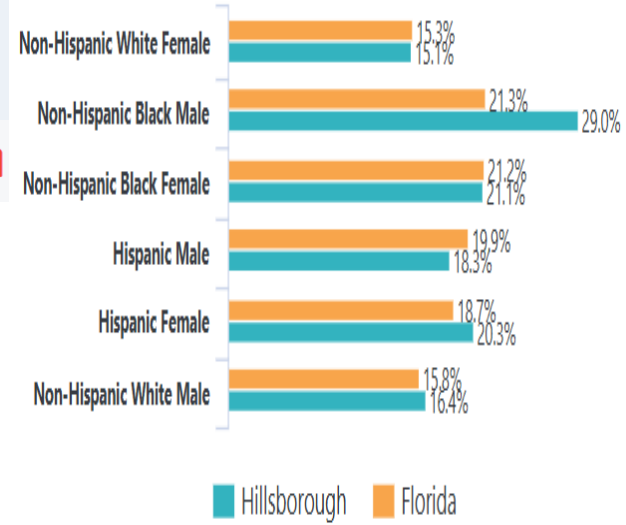
Hillsborough

Select Year:

2022



RACE/ETHNICITY AND SEX, 2022



Measures for Justice

All Measures - Florida



[Home](#) | [Florida](#) ▼ | [Select County](#) ▼

2009 - 2013 ▼

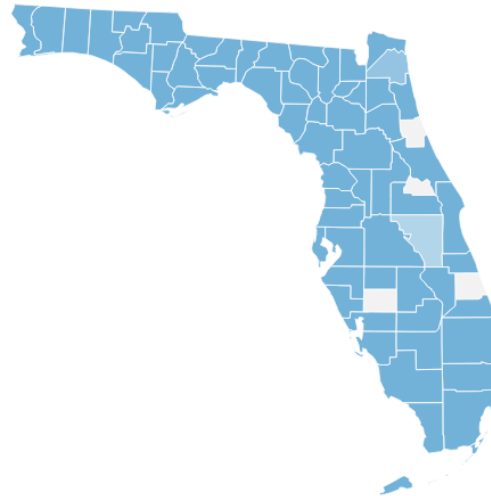
Florida

Population	18,801,310
Counties	67
Largest Municipality	Jacksonville
Cases	3,097,814
Years	2009-2013

Available Measures	22
Core	13
Companion	9

What Is a Measure?

MFJ's performance measures provide a comprehensive picture of how cases are being handled across counties from arrest to post-conviction. The map to the right shows the number of measures available in each county. Select a county to find out more.



Available Measures
8 22

What Is a Measure?

MFJ's performance measures provide a comprehensive picture of how cases are being handled across counties from arrest to post-conviction. The map to the right shows the number of measures available in each county. Select a county to find out more.

Unfiltered

Race / Ethnicity

Sex

Age

Court Type

Offense Severity

Offense Type

Attorney Type

Drug Type

Drug >

<https://measuresforjustice.org/portal/FL?c=1>

County Health Rankings and Roadmaps

Health Is Where We Live

The *County Health Rankings & Roadmaps* program compares the health of nearly all counties in the United States to others within its own state, and supports coalitions tackling the social, economic and environmental factors that influence health.

The program is a collaboration between the Robert Wood Johnson Foundation and the [University of Wisconsin Population Health Institute](#) to measure the progress of building a Culture of Health.

<https://www.countyhealthrankings.org/>

Florida

2020

Select another state

Overview

Rankings

Measures

Downloads

Compare Counties

Select a county



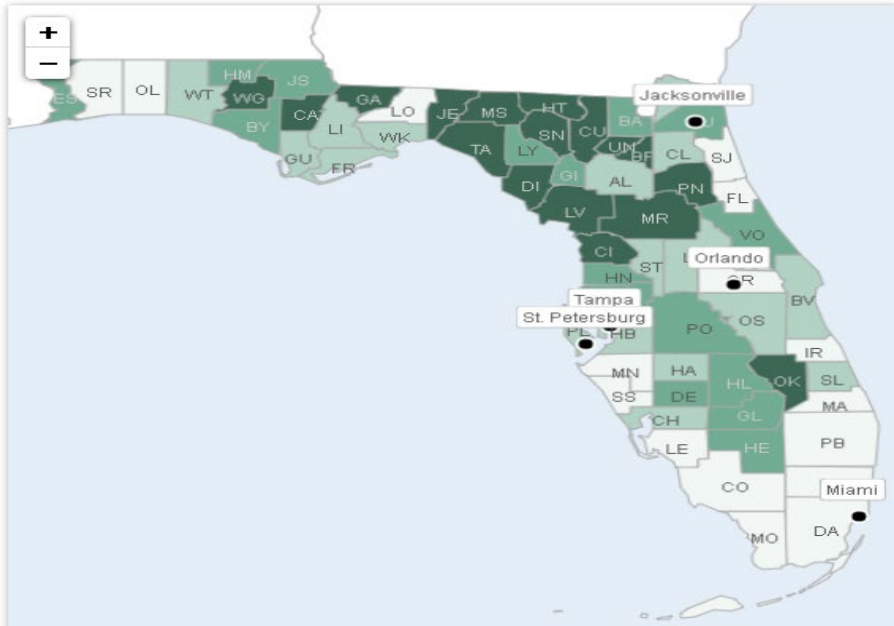
Print



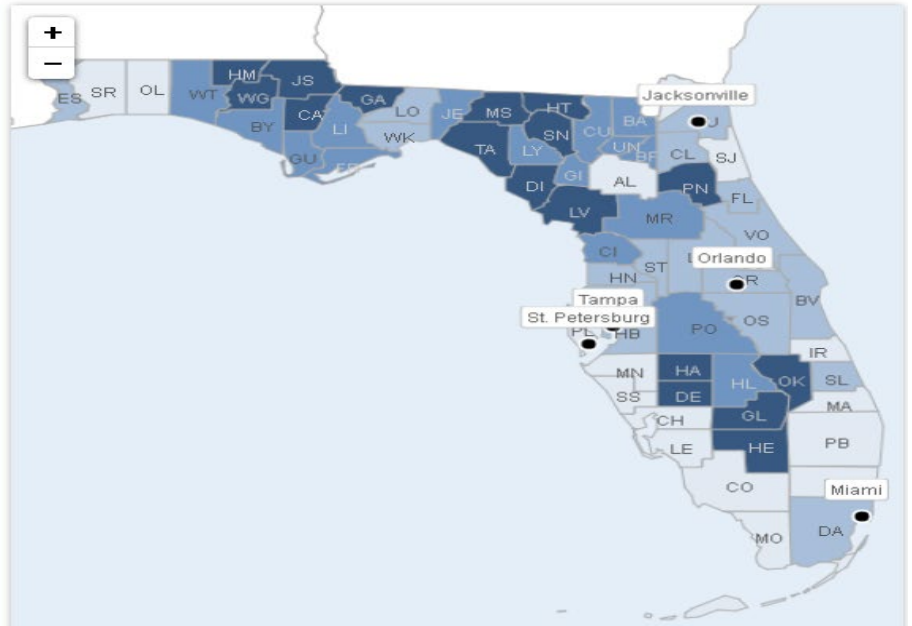
Help

Find out how healthy your county is and explore factors that drive your health

Overall Rankings in Health Outcomes i



Overall Rankings in Health Factors i



Cindy A. Schwartz, MS, MBA

Introduction

- Project Director (retired 2022)- Eleventh Judicial Circuit of Florida, Criminal Mental Health Project- Jail Diversion Programs (The Miami Model)
- National Center for State Courts (NCSC) Certified Court Manager (CCM)
- Advanced Level Facilitator of WRAP (Wellness Recovery Action Plan)
- Senior Consultant to the Policy Research Associates (PRA) GAINS Center (SAMHSA) and provides training and technical assistance on How Being Trauma Informed Improves Criminal Justice Responses, Trauma Informed Treatment Courts, SSI/SSDI Outreach, Access, and Recovery (SOAR) and Sequential Intercept Model

Cindy A. Schwartz, MS, MBA

Areas of Expertise



- Recovery and Resilience
- WRAP (Wellness, Recovery, Action, Plan)
- Peer Specialists
- Trauma
- SOAR (SSI/SSDI, Outreach, Access and Recovery)
- Sequential Intercept Model
- Cross-system collaboration
- Specialty courts

Michele Merritt, Esq.

Introduction

- **Background:** President at New Futures, attorney and advocate with extensive experience in health policy and civic empowerment.
- **Expertise:** Specializing in substance use disorder treatment access, policy change, and legal frameworks.

Michele Merritt, JD

Areas of Expertise



- Health Insurance Law and Regulation
- Confidentiality and Compliance
- Leveraging Medicaid
- Policy Development

Health Insurance Law and Regulation

- Mental Health Parity
 - Review the history and requirements of the federal law
 - Discuss challenges to enforcement
 - Develop skills to identify potential violations of parity
 - Discuss methods for ensuring carrier compliance
- Reviewing Barriers Role of Licensing in Preventing Reimbursement
 - Review the difference between licensing standards and carrier requirements for reimbursement
 - Understand the role of NCQA and methods to influence carrier practices
 - Review case study examples of legislation to compel change in carrier practices

Confidentiality and Compliance

- HIPAA/Part 2
 - Review the history and requirements of the federal law
 - Discuss recent changes to 42 CFR Part 2
 - Review methods to ensuring care coordination for BH populations
- Part 2 and FERPA
 - Review the intersection between these two federal laws/regulations
 - Review case study examples where both laws impact care for youth
 - Develop strategies for ensuring compliance

Leveraging Medicaid

- Impact of Medicaid Expansion on SUD populations
 - Review the history and requirements of the federal law
 - Data of impact
- EPSDT
 - Review EPSDT's role in covering SUD treatment
 - Develop an understanding of when EPSDT can be used to provide SUD care for minors
 - Review NH's experience leveraging EPSDT for SUD treatment prior to Medicaid Expansion
 - Understand advocacy strategies to ensure utilization of EPSDT for youth
- Medicaid Administrative Claiming
 - Review Medicaid Administrative Claiming
 - Identify circumstances in which Medicaid Administrative Claiming can be used
 - Review NH's experience leveraging MAC for SUD treatment courts

Policy Development

- Legislation Drafting
 - Review ideal process for creating legislation
 - Review IRAC method for persuasive writing
 - Review case studies of poorly drafted legislation and identify changes for impact
- Issue Campaign Management
 - Review effective campaign elements
 - Understand tools available to impact policy
- Review Legislation
 - Review NH's experience leveraging other federal funding sources to support individuals with SUD
 - Understand policy development opportunities utilizing TANF and CCDF funds

Technical Assistance (TA) Overview

TA Needs Assessment Survey

- TA Needs Assessment at the beginning of each SFY (or upon execution of new grants)
- Survey at beginning of July 2024
 - To learn about grantee TA needs and work with community from there to schedule/plan events
- Menu and TA request form available on our website

TECHNICAL ASSISTANCE

- Grant application preparation and review
- Strategic planning
- Sustainability planning
- Target population needs assessments and gap analysis
- Document review
- Asset mapping
- Data analysis and collection
- Relationship building, community partnership assessment
- Best practice guidance
- Program development
- Peer-to-peer learning collaboratives and discussion facilitation

TRAINING SERVICES

The CJMHSA TAC provides single and multi-day training options on a variety of best practices and topics related to the target populations and services of the DCF Reinvestment Grant Program. The training list below is non-exhaustive and only demonstrative of most commonly requested topics. If your grant program has a specific training need that is not identified in this list, please contact the TAC.

General Program and Grant Management

- Grant development and planning for pursuing external funding
- Grant management, oversight, and sustainability approaches
- Building strategic partnerships
- Systems development, integration, and assessment for grant/program planning

Service and Practice Specific

Systems

- Sequential Intercept Mapping (SIM)
- Sequential Intercept Mapping follow-up
- CJMHSA Planning Council membership and roles
- Transportation Plan review and recommendations
- Juvenile justice systems development
- Children's Systems of Care
- Cost effectiveness, cost offset, or cost avoidance methods
- Evaluation methods
- Developing and supporting recovery-oriented systems of care
- Addressing stigma across systems and programs

Early Intervention/Prevention

- Screening and risk assessment tools and strategies
- Crisis Intervention Teams (CIT)
- Mobile Crisis Models
- Assertive Community Treatment (ACT) Teams
- Jail diversion strategies
- Early intervention in psychosis

Treatment and Intervention Services

- Motivational Interviewing (MI)
- Integration of physical and behavioral health services
- Confidentiality (HIPAA and 42 CFR Part 2)
- Best Practices for the use of Medication Assisted Treatment (MAT)
- Co-Occurring Disorders and Service Delivery
- Central Receiving Facilities (Baker Act and Marchman Act)
- Forensic Intensive Case Management (FICM)
- Problem-solving courts (Mental Health Court, Drug Court, Marchman Court, Juvenile Drug Court, etc.)
- Addressing impacts of opioid and other substance use

Reentry and Recovery

- Permanent Supportive Housing and Housing First Principles
- Supported Employment
- Discharge and transition planning (APIC)
- Enhancing the use of peers and peer services
- Care coordination and coordination of complex care management (closed loop referrals, warm handoffs, follow-up methods)

METHODS OF SERVICE: PROJECT-SPECIFIC OR ONE-TIME

- On-site, in person
- Telephonic
- Virtual meeting, video conferencing

Technical Assistance Engagements



On-site engagements (in your community)



Off-site / virtual engagements



Cadre of TA areas tailored to grantee needs

TA Examples

Where Are You So Far?

What are you already doing well with your clients?

What would you like to do differently?

What would be helpful as you start to practice and build on your skills?

Zoom Meeting Controls: Mute, Video, Chat, Screen Share, Share Screen, Microphone Off, Leave

Zoom Meeting Participants: Corynne, Matt O'Connell, [Name], [Name], [Name], [Name], [Name], [Name], Rory Tuttle, [Name]

Motivational Interviewing



Program “Mission” and “Vision” Planning

TA Examples

Toolkits and Resources



Webinar Recordings

While not all of the topics of the webinars below specifically on the target population of Pinellas County's Road to Success Program, the suggested sustainability strategies and resources referenced are standard best practices for sustainability planning

Council of State Governments Justice Center: [How local entities can learn about and apply for criminal justice resources](#)

Substance Abuse and Mental Health

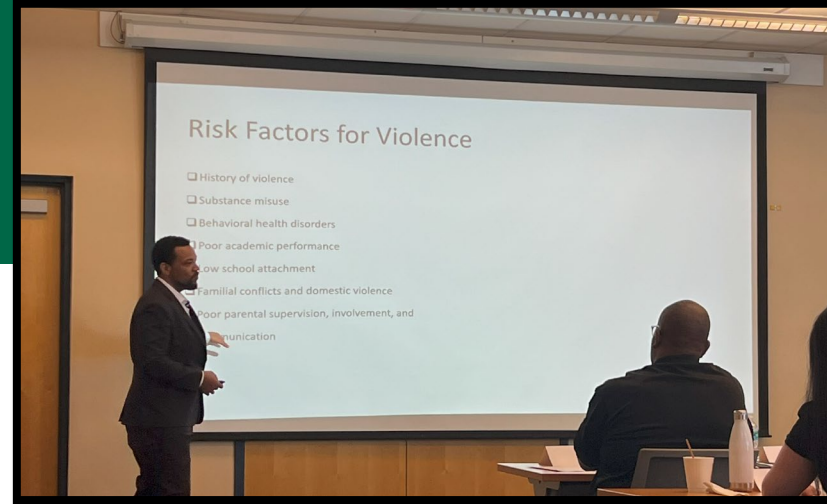
Sustainability Toolkits and Samples

National Center on Substance Abuse and Child Welfare: [Sustainability Toolkit](#)

Utah State University: [Strategies for Sustainability of Grant Funded Programs](#)

Substance Abuse and Mental Health Services Administration: [Sample](#)

“Sustainability” Best Practices

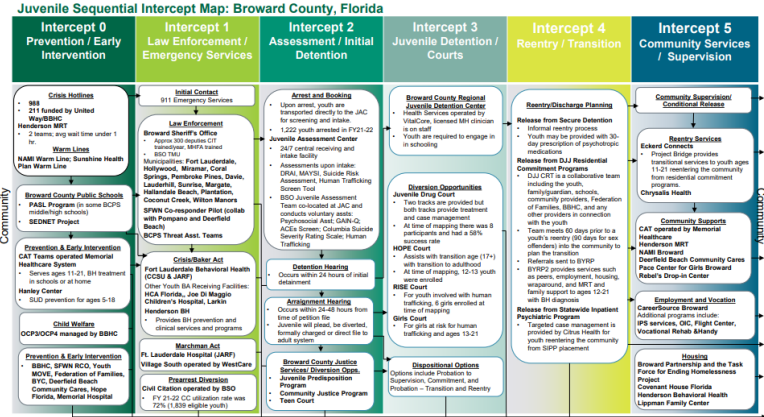


Youth Violence Prevention

Sequential Intercept Mapping → Grant Programs

Broward County (BBHC)

- 2016 SIM → Peers and navigator priority
- 2023 SIM



Broward Youth Reentry Program-2

- Expansion of BYRP that concluded in April 2022
- Target: youth involved in DJJ with MH/SUD
- Services are youth-driven, peers embedded at multiple levels



Questions?

What's next?

- Next webinar- additional SMEs
- Seeking input for SME recruitment
- Calls for TA prep
- Booking into Fall



Thank you!

Contact Us

Abby Shockley, MPH, CPH

Director, CJMHSA TAC

ashockley1@usf.edu

Katelind Melendez, MA, MS

Assistant Program Director, CJMHSA TAC

katelind@usf.edu

Beth Holland, MBA

Learning & Development Facilitator, CJMHSA TAC

holland75@usf.edu



CJMHSA TAC Website
www.floridatac.org