



Get Ready to

LIVE THE *Bull's* LIFE

Your Comprehensive Guide to Living on Campus



UNIVERSITY of
SOUTH FLORIDA
Housing & Residential Education



WE ARE Housing & Residential Education

OUR *Vision*

Our dynamic residential experience produces proud USF alumni and engaged global citizens.

OUR *Mission*

We are dedicated to creating safe and welcoming residential communities that promote student success.

OUR *Motto*

Best place to **LIVE**.
Best place to **WORK**.
Best place to **LEARN**.

WELCOME HOME

For most students, the transition to college life at the University of South Florida starts with the residential experience. By living on campus, you will benefit from a welcoming community, highly trained staff, and a residential curriculum designed to enrich your experience and further support your academic success. With multiple room styles to choose from on campus, we have plenty of options for our increasingly diverse residential population. Explore what we have in store for you!

NEW STUDENT **TIMELINE**

December

Fall/Spring 2025-26
Applications Open

March

Summer 2025
Application Opens

April

Fall/Spring 2025-26 Room
Selection Begins

June

Summer B Move-In

August

Fall 2025 Grand Opening



All dates are subject to change. Review all of the important dates at usf.edu/housing.



4 STEPS TO **LIVING ON CAMPUS**

1

Complete the housing application in the Housing Portal

2

Pay the \$50 application fee

3

Complete orientation reservation

Visit usf.edu/orientation for registration information.

4

Select your room!

Select your room! Fall/Spring 2025-26 room selection will open in March. Check your USF email account regularly for updates

Check your status

Find out more about the application process and room selection timeline!

If living on campus is a priority for you, apply before the April 7 priority deadline and complete the steps to living on campus so you can be eligible to participate in the room selection process in April. You do not need to commit to the university to apply for housing. However, if you decide not to attend USF, it will be your responsibility to cancel your housing contract before the cancellation deadline to avoid charges. View the cancellation deadlines in the housing contract.



Housing Portal



THE **ON-CAMPUS** EXPERIENCE

Campus Involvement

The Residence Hall Association (RHA) represents and assists our campus residents. RHA organizes large-scale programs to unite our many communities, serves as a governing body for the campus residents, and works to represent the residents by advocating for their needs. Residents involved with RHA gain leadership experience that will serve them for the rest of their lives. Speaking of leadership, the National Residence Hall Honorary (NRHH) is the premier leadership-based honor society comprised of the top 1% of student leaders residing on campus. NRHH members volunteer with charities and organizations throughout the year. These unique opportunities further strengthen a sense of service and commitment to leadership in the NRHH organization.

Supportive Environment

All residents will have a Resident Assistant (RA) or a Community Manager (CM). The RA/CM is a student para-professional staff member knowledgeable in campus resources, trained in conflict resolution, multicultural awareness, community building, crisis response, and more. Think of the RA/CM as a guide! They are a starting place for all questions USF Housing and beyond.

Residential Curriculum

The learning process continues beyond the classroom walls when you live on campus. Everything we do is guided by a residential curriculum. This means established learning goals are at the forefront of our interactions with residents. Our team utilizes a sequenced learning approach that brings resources to each student when needed. This approach eases the transition process and helps students succeed by anticipating needs before they are recognized.



A SPACE TO MEET YOUR NEEDS

A SPACE TO MEET YOUR NEEDS
 A SPACE TO MEET YOUR NEEDS
 A SPACE TO MEET YOUR NEEDS
 A SPACE TO MEET YOUR NEEDS



The residence on campus represent
49 & 64
 STATES COUNTRIES

10 LIVING
 LEARNING
 COMMUNITIES

30

RESIDENCE
 HALLS



1848 Traditional
 Style Spaces

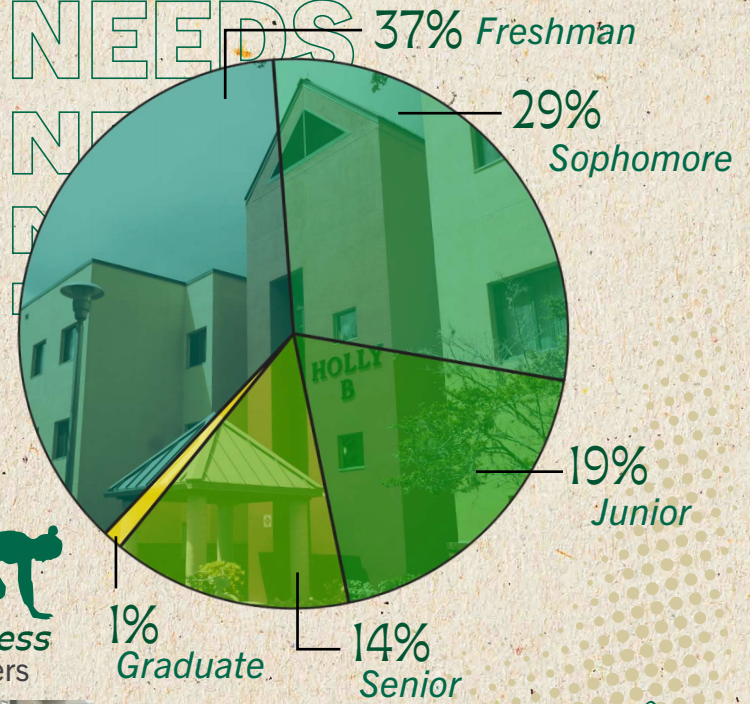
2446 Suite
 Style Spaces

1716 Apartment
 Style Spaces



10 GREEK
 HOUSES

ΑΔΠ ΔΓ
 ΓΦΒ ΔΔΔ
 ΣΔΤ ΧΩ
 ΖΤΑ ΚΔ
 ΣΚ ΑΟΠ



3 Fitness
 Centers



1% Graduate

14% Senior

3 Dining
 Halls



WIFI
 for all residents

2 Basketball
 Courts



4 Volleyball
 Courts



15 Laundry Rooms

PUBLIX
 Grocery Store On
 Campus



3 Pools

2 RESIDENT
 MAIL
 CENTERS



SAFETY, SUPPORT & ACCOMMODATIONS



90+

BLUE LIGHT
EMERGENCY
PHONE LOCATIONS

SAFETY IS OUR PRIORITY

- University police headquartered on campus.
- Exterior doors controlled by exclusive USF ID Card access.
- SAFE Team providing transportation on campus at night.
- Security officers patrolling campus.
- Blue light emergency phones connecting to 911 throughout campus.

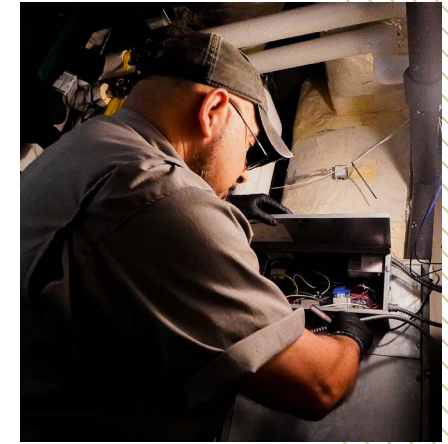


Don't forget to enroll in AlertUSF, a comprehensive Emergency Notification System releasing immediate text notifications to keep the USF community informed.

Log into your NetID to register.

SUPPORT SERVICES

- Service desks
- 24-hour on call maintenance
- Student Resident Assistants and professional Residence Life Coordinators on-call 24/7
- In-hall tutoring
- Residential mail centers



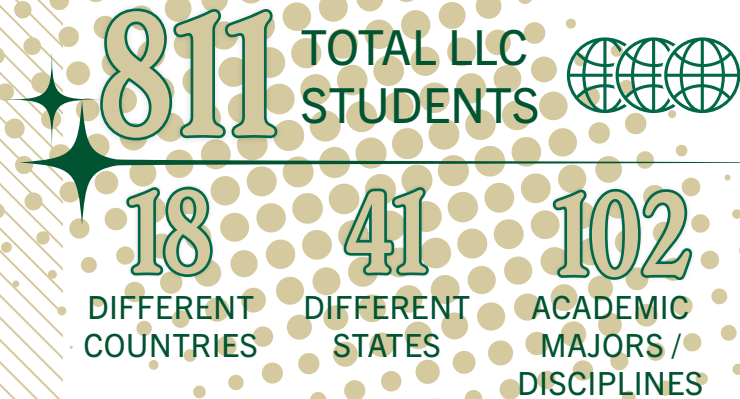
ACCOMMODATIONS

We are committed to providing reasonable accommodations for students of all abilities. For an ADA, ESA or medical accommodation, please submit your request via the Housing Portal after you have completed your housing application. Submit your request by May 1 for priority consideration. We will work with campus partners to do our absolute best to accommodate you. For any other accommodation requests, please call or email us at 813-974-0001 or housing@usf.edu.



LIVING LEARNING COMMUNITIES

Living Learning Communities (LLCs) are residential communities with a focus on an academic major or special interest. When you live in an LLC, you get to connect with other Bulls who share similar majors and interests, engage with faculty and staff right in your hall, and enjoy experiences designed just for you.



Career Readiness
LLC students engage with faculty, staff and members of the community around topics that support career readiness.



Events
Numerous co-curricular student centered events are held among all LLCs during the academic year.



In-Hall Advising & Tutoring
LLC students engage with Academic Advisors and/or tutoring services within the halls through their respective LLC.



BULLS BUSINESS COMMUNITY
DESIGNED FOR: Bulls Business Network students and Bulls to Business programs



NURSING TRAILBLAZERS
DESIGNED FOR: College of Nursing Students



COPH BULLS IN HEALTH
DESIGNED FOR: All first-year Health Sciences and Public Health majors



EDUCATION
DESIGNED FOR: All first-year Education majors



ENGINEERING
DESIGNED FOR: First-Year and returning E-LLC students enrolled in the College of Engineering



JUDY GENSHAFT HONORS COLLEGE
DESIGNED FOR: Judy Genshaft Honors College Students



RISING HEALTH PROFESSIONALS
DESIGNED FOR: First-Year Pre-Health Students from the College of Arts and Sciences



ROTC
DESIGNED FOR: USF ROTC Program Students



STONEWALL SUITES
DESIGNED FOR: LGBTQIA+ and allied students



ZIMMERMAN ADVERTISING PROGRAM
DESIGNED FOR: First-Year Advertising Majors



LEARN MORE AT [USF.EDU/LLC](https://usf.edu/llc)

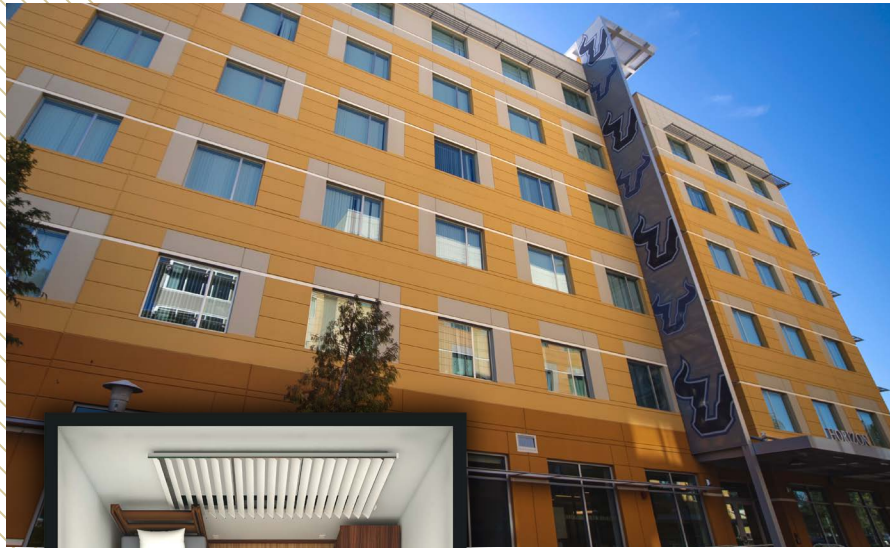
Traditional Style

THE VILLAGE

BEACON | ENDEAVOR | HORIZON | PINNACLE | SUMMIT

TYPICAL DOUBLE ROOM SIZE

Most room dimensions are 11'6" x 16'2"



ROOM FEATURES

- Provided furniture per resident includes:
 - A twin XL bed
 - A dresser (measures approx. 24"x36")
 - A chair and desk (measures approx. 24"x40") with drawers (measures approx. 16"x22")
- Built-in closet (measures approx. 4'10" wide)



HALL AMENITIES

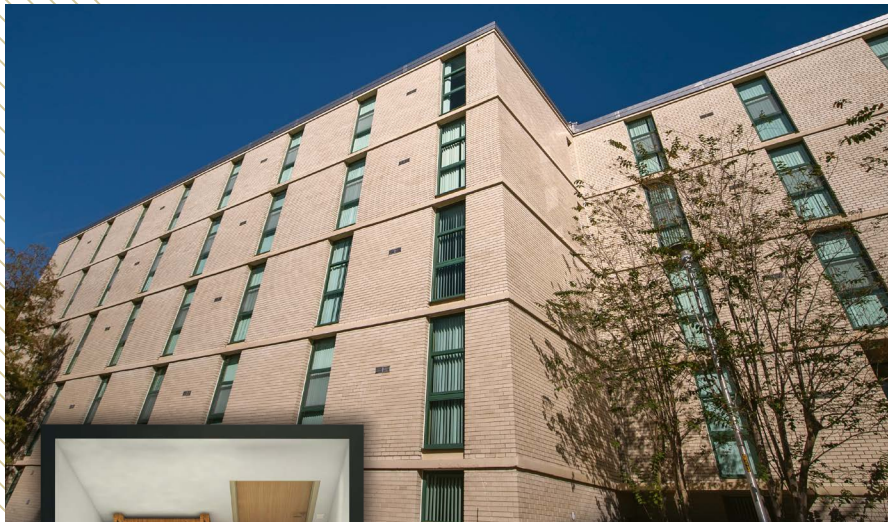
- Ground floor features a full kitchen, gaming area, TV/media lounge, a multipurpose room, and a laundry room
- Activity lounges and quiet lounges on every floor
- Service desk
- Close to The Hub dining facility and The Fit recreation facility
- Ethernet connection in-room and WiFi throughout the building
- 250Mbps average internet speed (speeds up to 1Gbps)
- 24-hour, on-call emergency maintenance



Traditional Style
BETA & CASTOR

TYPICAL ROOM SIZE

Approximately 170 square feet. Most bedroom area dimensions are 16' x 11'



ROOM FEATURES

- Provided furniture per resident includes:
 - A twin XL bed
 - A dresser (measures approx. 18"x29.5")
 - A chair and desk (measures approx. 24"x42")
- Shared closet space



HALL AMENITIES

- Community bathroom cleaned daily
- Laundry facility on first floor
- Community Kitchen on every floor
- Study lounge with Ethernet connection on each floor
- Short walk to Castor Beach
- Close to Argos Exchange dining facility
- 24-hour, on-call emergency maintenance



Suite Style

THE VILLAGE

BEACON | ENDEAVOR | HORIZON | PINNACLE | SUMMIT

TYPICAL DOUBLE SUITE SIZE

Approximately 213 square feet. Most bedroom area dimensions are 11'6" x 16'4"

- Size does not include closet, hall, or bathroom
- Double End Suites and Single Suites are available. Review the sizes on our website: usf.edu/housing



ROOM FEATURES

- Provided furniture per resident includes:
 - A twin XL bed
 - A dresser (measures approx. 24"x36")
 - A chair and desk (measures approx. 24"x40") with drawers (measures approx. 16"x22")
- One built-in closet per resident (measures approx. 4'10" wide)
- Each suite style room includes a bathroom with a toilet, shower and in-room sink
- Bathrooms are cleaned weekly. Toilet paper and shower curtain liners are provided



HALL AMENITIES

- Ground floor features a full kitchen, gaming area, TV/media lounge, a multipurpose room, and a laundry room
- Activity lounges and quiet lounges on every floor
- Ethernet connection in-room and WiFi throughout the building
- 250Mbps average internet speed (speeds up to 1Gbps)
- 24-hour, on-call emergency maintenance



Suite Style

CYPRESS HALL

TYPICAL DOUBLE SUITE SIZE

Approximately 212 square feet. Most bedroom area dimensions are 14'2" x 12'9"



ROOM FEATURES

- Provided furniture per resident includes:
 - A twin XL bed
 - A dresser (measures approx. 24"x30")
 - A chair and desk (measures approx. 24"x48")
- One built-in closet per resident
- Each suite style room includes a bathroom with a toilet, shower and in-room sink
- Bathrooms are cleaned weekly. Toilet paper and shower curtain liners are provided

HALL AMENITIES

- Laundry facility in community building (Cypress E)
- Kitchen on every floor
- Study lounge with Ethernet connection on each floor
- Ethernet connection in-room and WiFi throughout the building
- 250Mbps average internet speed (speeds up to 1Gbps)
- 24-hour, on-call emergency maintenance



Suite Style

JUNIPER & POPLAR HALL

TYPICAL DOUBLE SUITE SIZE

Approximately 168 square feet. Most bedroom area dimensions are 11'6" x 14'6"



ROOM FEATURES

- Provided furniture per resident includes:
 - A twin XL bed
 - A dresser (measures approx. 24"x30")
 - A chair and desk (measures approx. 24"x48")
- Large shared closet space
- Each suite style room includes a bathroom with a toilet, shower and in-room sink
- Bathrooms are cleaned weekly. Toilet paper and shower curtain liners are provided



HALL AMENITIES

- Laundry facility, mail center, and dining hall on first floor
- Retail Shops (coffee shop and convenience store) on first floor
- Housing service desk on first floor
- Kitchen on every floor
- Study lounge with Ethernet connection on each floor
- Ethernet connection in-room and WiFi throughout the building
- 250Mbps average internet speed (speeds up to 1Gbps)
- 24-hour, on-call emergency maintenance

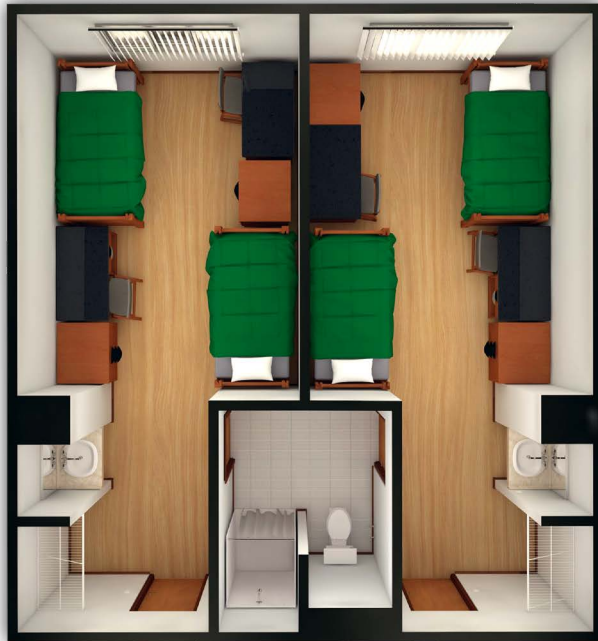


Suite Style

MAPLE HALL

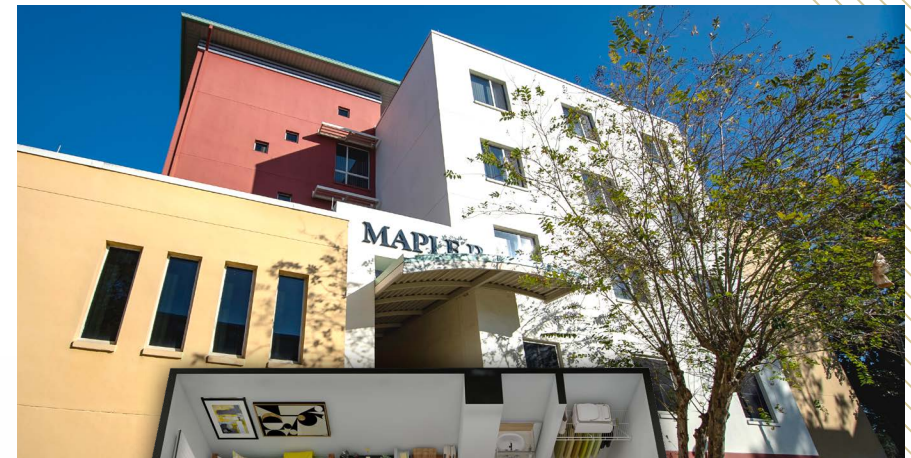
TYPICAL DOUBLE SUITE SIZE

Approximately 168 square feet. Most bedroom area dimensions are 11'6" x 14'



ROOM FEATURES

- Provided furniture per resident includes:
 - A twin XL bed
 - A dresser (measures approx. 24"x30")
 - A chair and desk (measures approx. 24"x48")
- Closet space
- Each suite style room includes a bathroom with a toilet, shower and in-room sink
- Bathrooms are cleaned weekly. Toilet paper and shower curtain liners are provided



HALL AMENITIES

- Laundry facility on first floor
- Kitchen on every floor
- Study lounge with Ethernet connection on each floor
- Ethernet connection in-room and WiFi throughout the building
- 250Mbps average internet speed (speeds up to 1Gbps)
- 24-hour, on-call emergency maintenance



Apartment Style

CYPRESS APARTMENTS

Apartments are not currently available to first-year students

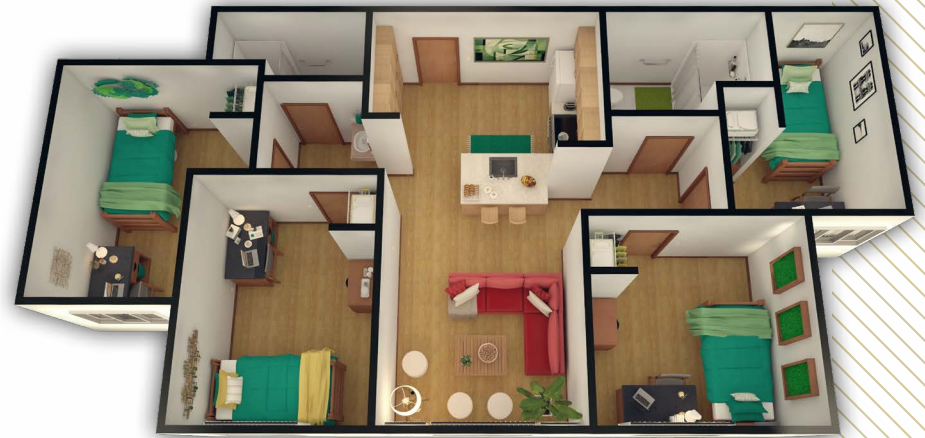
TYPICAL SINGLE BEDROOM SIZE

Approximately 120 square feet. Typical bedroom area dimensions are 9'6" x 12'



UNIT FEATURES

- Provided furniture in each bedroom includes:
 - A twin XL bed
 - A dresser (measures approx. 24"x30")
 - A chair and desk (measures approx. 24"x48")
- Closet space in each room
- Each unit typically includes two bathrooms
- Shower curtain liners are provided
- Each unit contains a full kitchen with a refrigerator, oven, stovetop and sink
- Each unit contains a furnished common living area



COMMUNITY AND HALL AMENITIES

- Laundry facility in Cypress E
- Ethernet connection for each resident in each bedroom
- WiFi throughout the building
- 250Mbps average internet speed (speeds up to 1Gbps)
- 24-hour, on-call emergency maintenance



Apartment Style

HOLLY APARTMENTS

Apartments are not currently available to first-year students

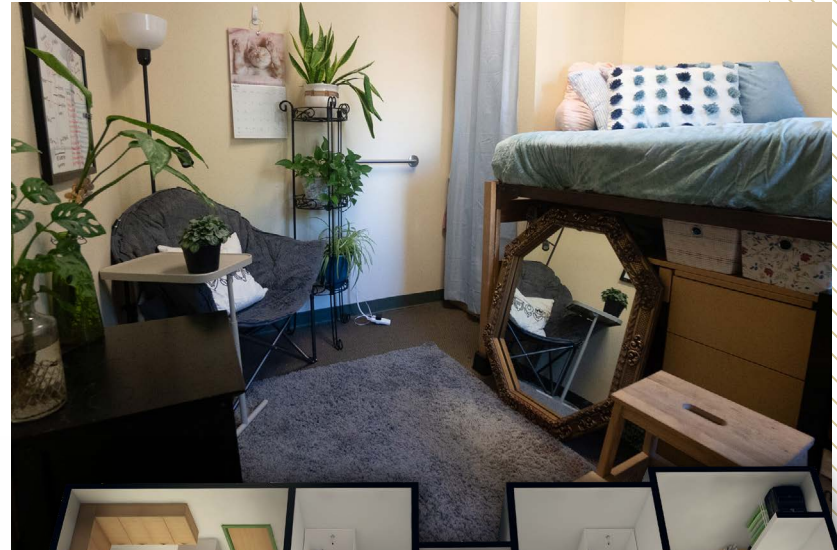
TYPICAL SINGLE BEDROOM SIZE

Approximately 90 square feet. Typical bedroom area dimensions are 8' x 10'



UNIT FEATURES

- Provided furniture per resident includes:
 - A twin XL bed
 - A dresser (measures approx. 29"x24")
 - A chair and desk (measures approx. 24"x42")
- Closet space in each room
- Each four-bedroom unit typically includes two bathrooms
- Each two-bedroom unit typically includes one bathroom
- Shower curtain liners are provided
- Each unit contains a full kitchen with a refrigerator, oven, stovetop and sink
- Each unit contains a furnished common living area



COMMUNITY AND HALL AMENITIES

- Laundry facilities in Holly H and Holly K
- Community lounges throughout buildings
- Service desk nearby
- Ethernet connection for each resident in each bedroom
- WiFi throughout the building
- 250Mbps average internet speed (speeds up to 1Gbps)
- 24-hour, on-call emergency maintenance



Apartment Style

KOSOVE APARTMENTS

Apartments are not currently available to first-year students

TYPICAL SINGLE BEDROOM SIZE

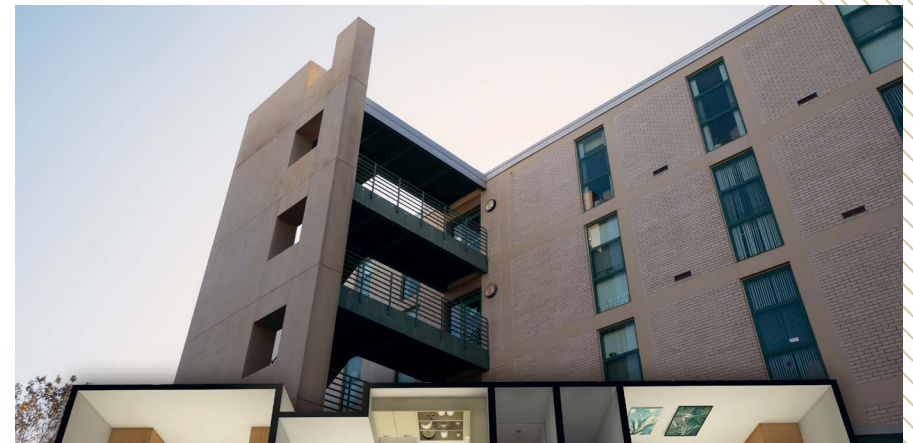
Approximately 110 square feet.
Typical bedroom area dimensions are 11'7" x 9'7"

TYPICAL DOUBLE BEDROOM SIZE

Approximately 180 square feet.
Typical bedroom area dimensions are 11'7" x 15'7"

UNIT FEATURES

- Provided furniture per resident includes:
 - A twin XL bed
 - A dresser (measures approx. 36"x24")
 - A chair and desk (measures approx. 36"x24")
- Closet space for each resident
- Shower curtain liners are provided
- Each unit contains a full kitchen with a refrigerator, oven, stovetop and sink
- Each unit contains a furnished common living area



COMMUNITY AND HALL AMENITIES

- Laundry facility on first floor
- Community lounge on first floor
- Dining hall right outside
- Service desk nearby
- Ethernet connection for each resident in each bedroom
- WiFi throughout the building
- 250Mbps average internet speed (speeds up to 1Gbps)
- 24-hour, on-call emergency maintenance



Apartment Style

MAGNOLIA APARTMENTS

Apartments are not currently available to first-year students



TYPICAL SINGLE BEDROOM SIZE IN A 4-BEDROOM APARTMENT

Approximately 102 square feet.

Typical bedroom area dimensions are 12'7" x 8'3"

TYPICAL SINGLE BEDROOM SIZE IN A 3-BEDROOM APARTMENT

Approximately 110 square feet.

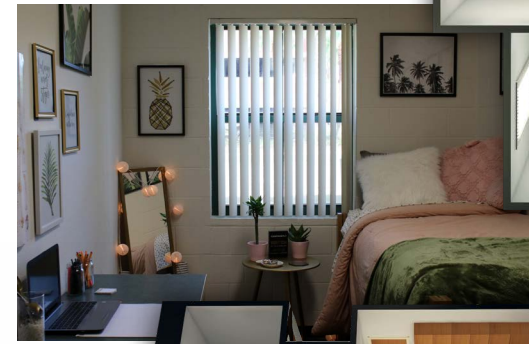
Typical bedroom area dimensions are 11'5" x 10'

UNIT FEATURES

- Provided furniture per resident includes:
 - A twin XL bed
 - A dresser (measures approx. 24"x29")
 - A chair and desk (measures approx. 24"x48")
- Closet space for each resident
- Each four-bedroom unit typically includes two bathrooms
- Each three-bedroom unit typically includes one bathroom
- Shower curtain liner provided
- Each unit contains a full kitchen with a refrigerator, oven, stovetop and sink
- Each unit contains a furnished common living area

COMMUNITY AND HALL AMENITIES

- Laundry facility in Magnolia H
- Community swimming pool
- Community lounges throughout buildings
- Service desk nearby
- Ethernet connection for each resident in each bedroom
- WiFi throughout the building
- 250Mbps average internet speed (speeds up to 1Gbps)
- 24-hour, on-call emergency maintenance





CONNECT WITH OUR TEAM



CONTACT:

Connect with our team over the phone at 813-974-0001 or via email at housing@usf.edu. You can also visit us in the central housing office at RAR 229.



TAKE A HOUSING TOUR:

Explore your options in person! Register for a housing tour online at usf.edu/housing.



**STAY
CONNECTED**

@USFHOUSING



usf.edu/housing
813-974-0001
housing@usf.edu



UNIVERSITY of
SOUTH FLORIDA

Housing & Residential Education