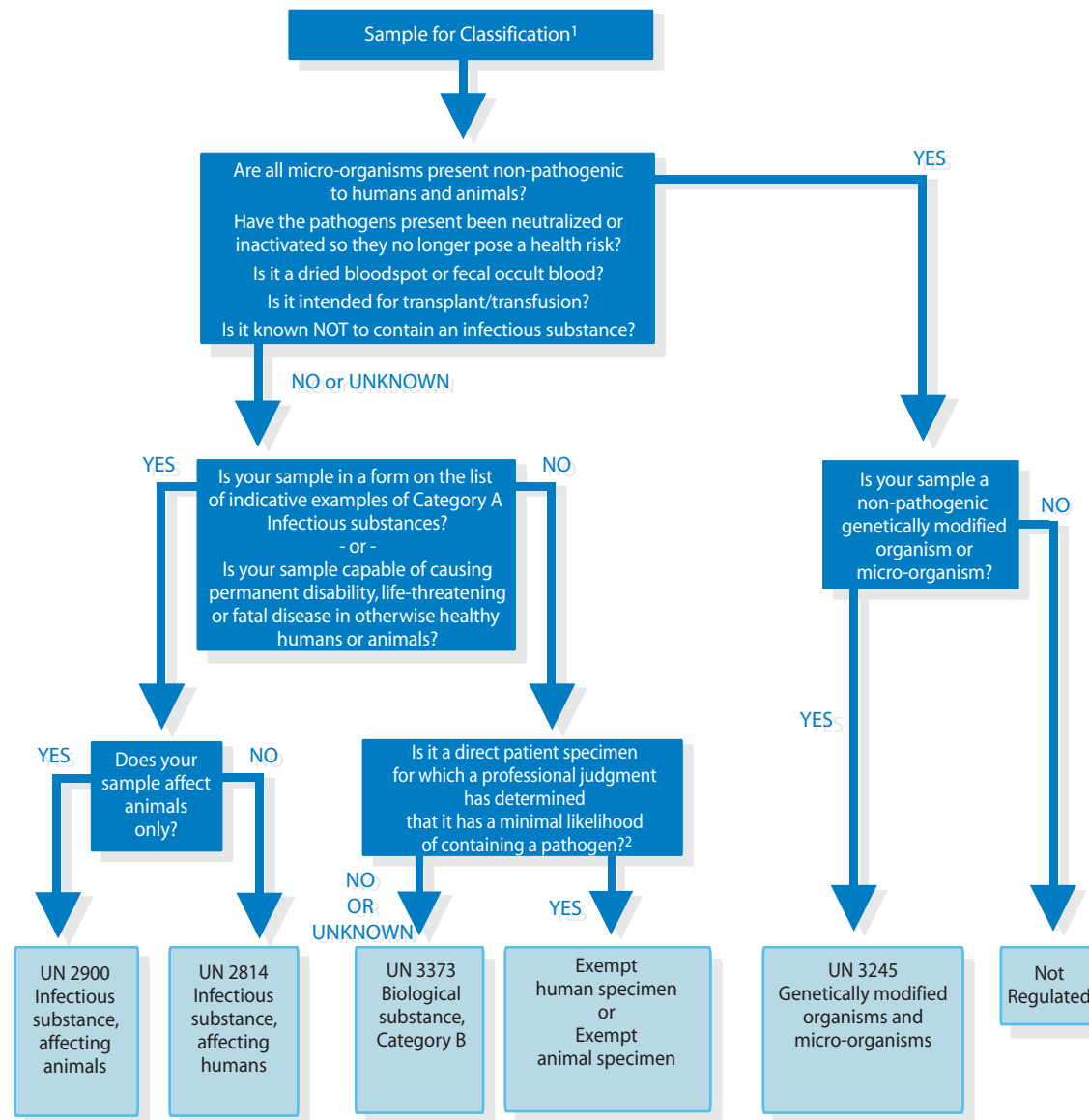


# Classification Flow Chart



<sup>1</sup> Anyone who attempts to classify an infectious substance must be trained and certified.

<sup>2</sup> In determining if a patient specimen has a minimal likelihood that a pathogen is present, an element of professional judgment is required. That judgment should be based on known patient medical history, symptoms and individual circumstances of the source, human or animal and endemic local conditions.

*Disclaimer – This flow chart is provided as guidance only.*