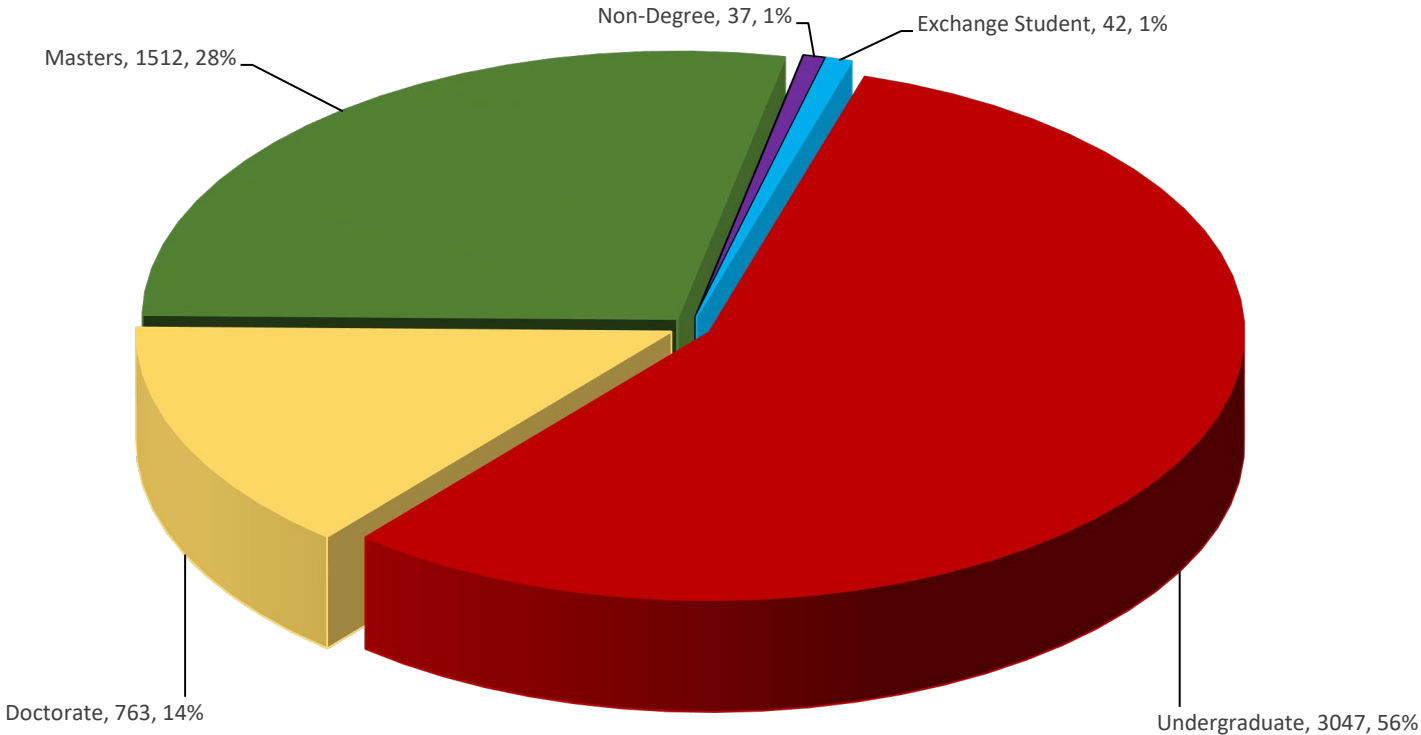


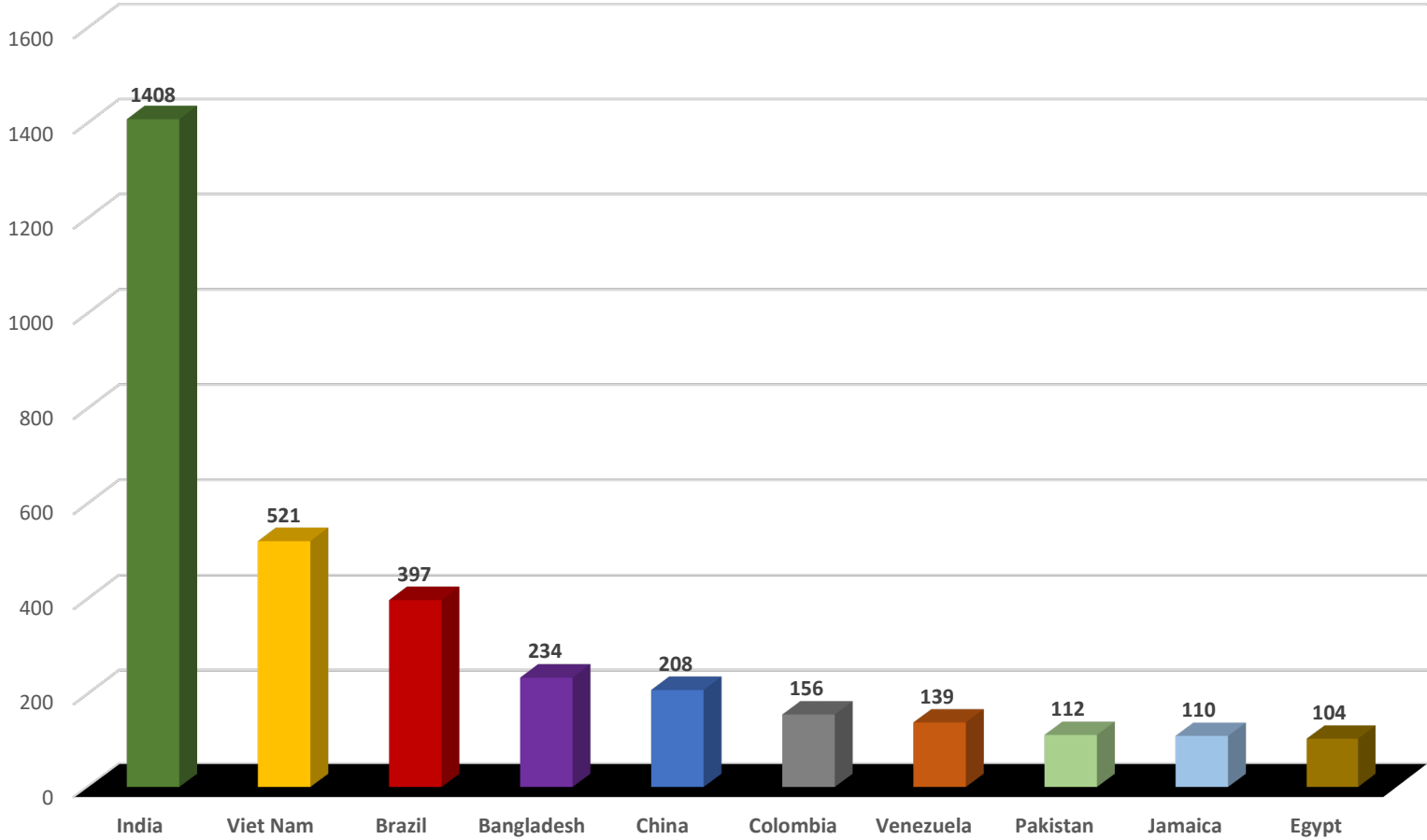
**USF World**  
Office of International Services  
**Fall 2024**

USF International Students Per Academic Level



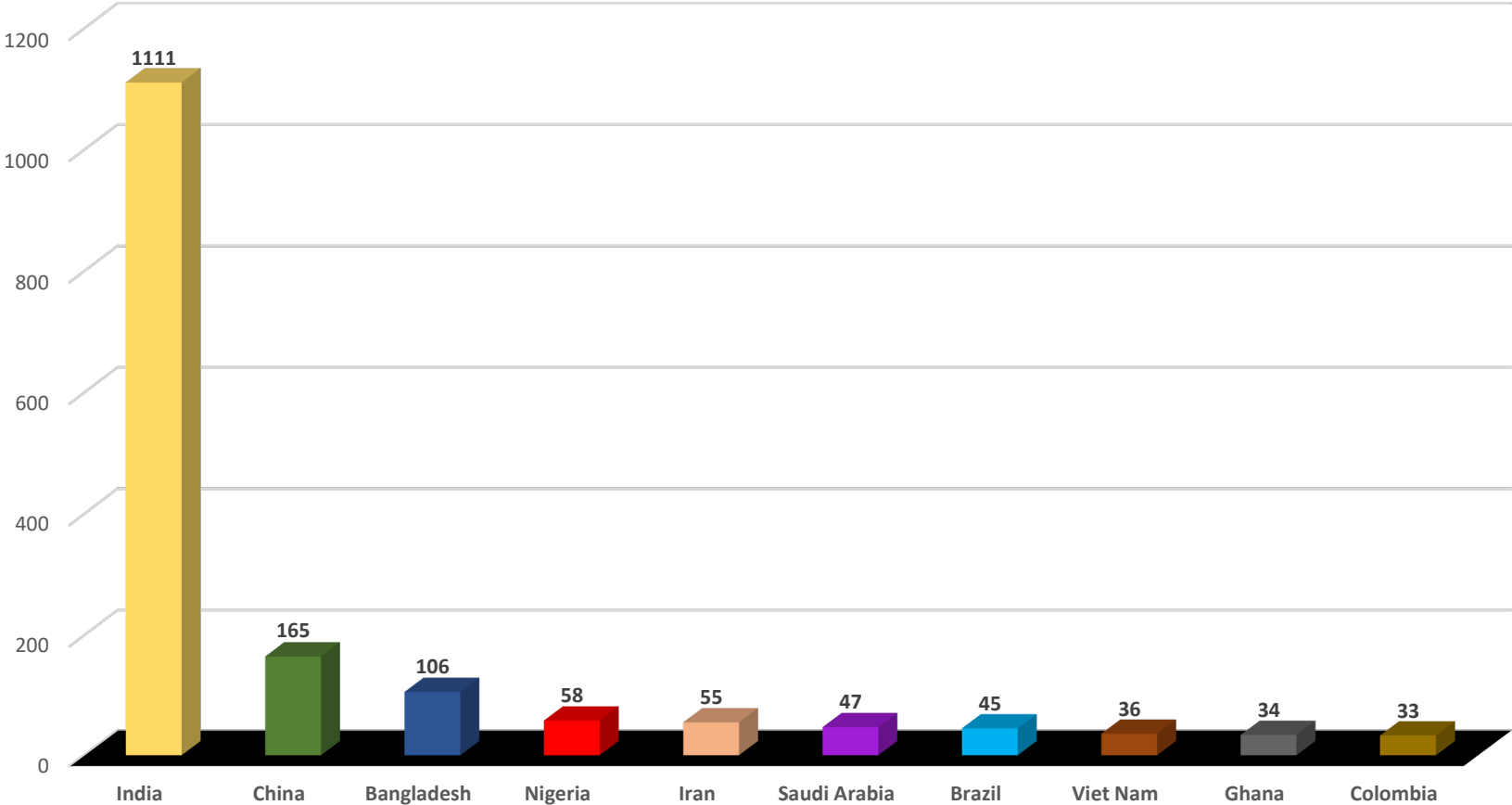
**USF World**  
Office of International Services  
**Fall 2024**

Top 10 Countries



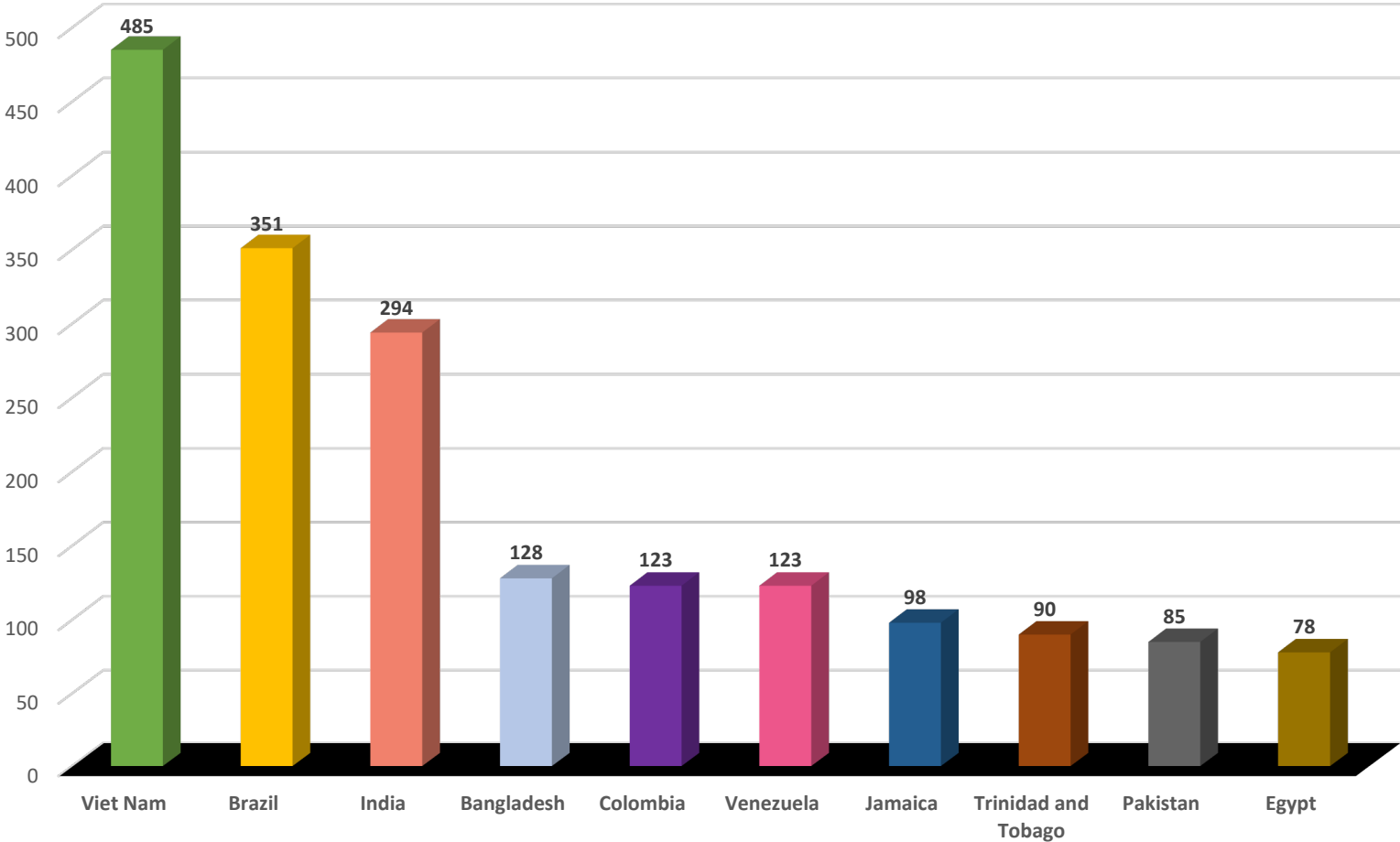
**USF World**  
Office of International Services  
**Fall 2024**

Top 10 Countries - Graduate Students



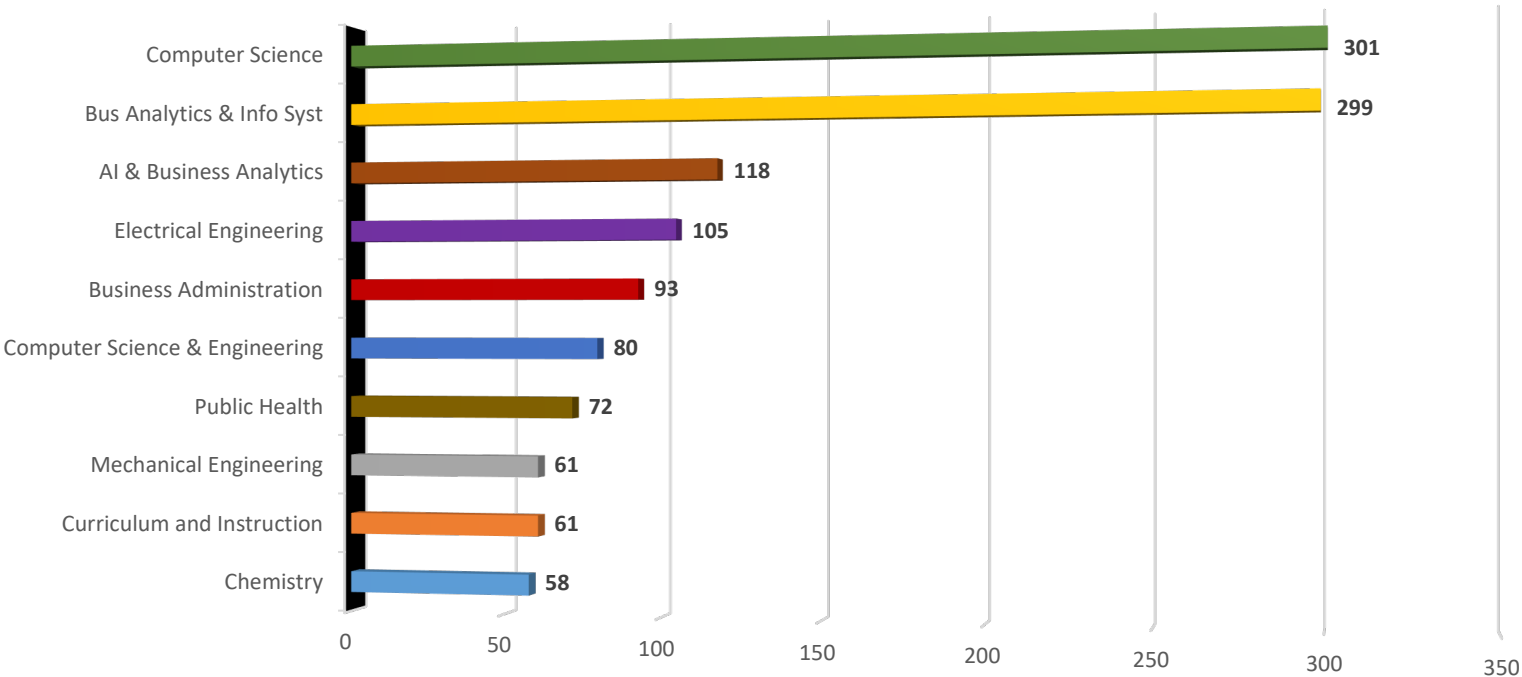
**USF World**  
Office of International Services  
**Fall 2024**

Top 10 Countries - Undergraduate Students



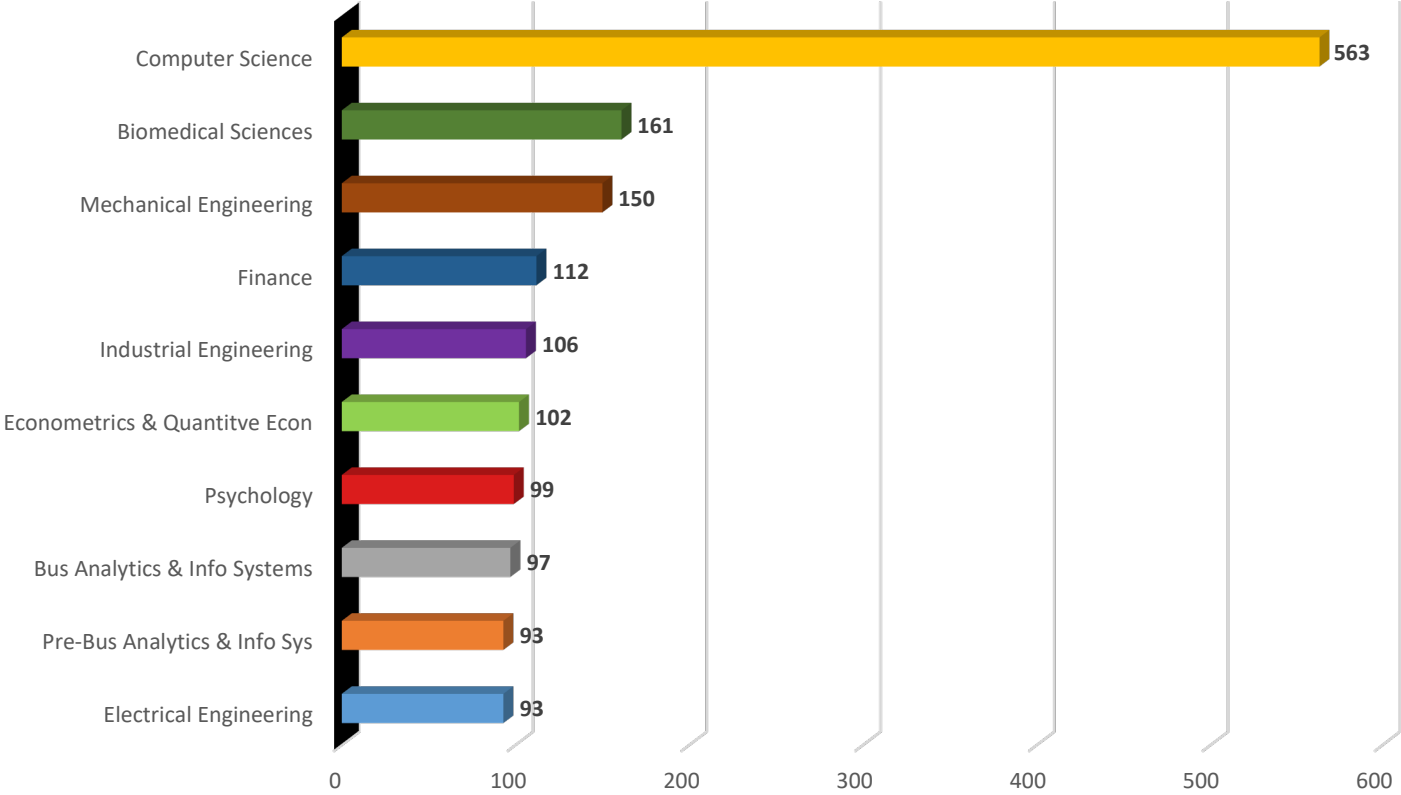
**USF World**  
Office of International Services  
**Fall 2024**

Top 10 Graduate Majors



**USF World**  
Office of International Services  
**Fall 2024**

Top 10 Undergraduate Majors



## Number of International Students Per Country (Alphabetical Order)

Country	# Per	%
Albania	13	0.24%
Algeria	1	0.02%
Angola	3	0.06%
Antigua and Barbuda	2	0.04%
Argentina	18	0.33%
Armenia	1	0.02%
Aruba	3	0.06%
Australia	9	0.17%
Austria	3	0.06%
Azerbaijan	50	0.93%
Bahamas	35	0.65%
Bahrain	3	0.06%
Bangladesh	234	4.33%
Barbados	20	0.37%
Belarus	8	0.15%
Belgium	3	0.06%
Belize	18	0.33%
Bermuda	3	0.06%
Bolivia	38	0.70%
Bosnia & Herzegovina	3	0.06%
Brazil	397	7.35%
Bulgaria	2	0.04%
Burkina Faso	2	0.04%
Cambodia	6	0.11%
Cameroon	4	0.07%
Canada	70	1.30%
Cayman Islands	22	0.41%
Chile	12	0.22%
China	208	3.85%
Colombia	156	2.89%
Congo (Brazzaville)	1	0.02%
Congo (Kinshasa)	5	0.09%
Costa Rica	11	0.20%
Croatia	1	0.02%
Cuba	2	0.04%

Cyprus	1	0.02%
Czech Republic	2	0.04%
Denmark	5	0.09%
Dominica	6	0.11%
Dominican Republic	3	0.06%
Ecuador	20	0.37%
Egypt	104	1.93%
El Salvador	7	0.13%
Ethiopia	10	0.19%
Finland	1	0.02%
France	27	0.50%
Georgia	4	0.07%
Germany	26	0.48%
Ghana	38	0.70%
Greece	5	0.09%
Guatemala	6	0.11%
Guyana	2	0.04%
Haiti	23	0.43%
Honduras	40	0.74%
Hong Kong	2	0.04%
Hungary	3	0.06%
Iceland	3	0.06%
India	1408	26.07%
Indonesia	5	0.09%
Iran	57	1.06%
Iraq	3	0.06%
Ireland	1	0.02%
Israel	3	0.06%
Italy	34	0.63%
Ivory Coast	2	0.04%
Jamaica	110	2.04%
Japan	30	0.56%
Jordan	12	0.22%
Kazakhstan	58	1.07%
Kenya	11	0.20%
Kuwait	35	0.65%

Kyrgyzstan	29	0.54%
Latvia	1	0.02%
Lebanon	9	0.17%
Libya	2	0.04%
Lithuania	1	0.02%
Macau	1	0.02%
Madagascar	1	0.02%
Malawi	3	0.06%
Malaysia	6	0.11%
Mali	2	0.04%
Mexico	43	0.80%
Moldova	3	0.06%
Morocco	7	0.13%
Myanmar	14	0.26%
Nepal	68	1.26%
Netherlands	9	0.17%
Nicaragua	8	0.15%
Nigeria	85	1.57%
Norway	4	0.07%
Oman	28	0.52%
Pakistan	112	2.07%
Palestine	5	0.09%
Panama	31	0.57%
Papua New Guinea	1	0.02%
Paraguay	3	0.06%
Peru	83	1.54%
Philippines	13	0.24%
Poland	5	0.09%
Portugal	5	0.09%
Qatar	1	0.02%
Romania	2	0.04%
Russia	58	1.07%
Rwanda	2	0.04%
Saint Kitts and Nevis	4	0.07%
Saint Lucia	3	0.06%
Saudi Arabia	62	1.15%

Serbia	10	0.19%
Singapore	2	0.04%
Sint Maarten	1	0.02%
Slovakia	1	0.02%
Slovenia	1	0.02%
South Africa	12	0.22%
South Korea	57	1.06%
Spain	56	1.04%
Sri Lanka	25	0.46%
Sudan	3	0.06%
Sweden	7	0.13%
Switzerland	4	0.07%
Syria	4	0.07%
Taiwan	23	0.43%
Tanzania	2	0.04%
Thailand	21	0.39%
Trinidad and Tobago	102	1.89%
Tunisia	1	0.02%
Turkey	50	0.93%
Turkmenistan	2	0.04%
Uganda	3	0.06%
Ukraine	37	0.69%
United Arab Emirates	2	0.04%
United Kingdom	38	0.70%
Uruguay	4	0.07%
Uzbekistan	78	1.44%
Venezuela	139	2.57%
Viet Nam	521	9.65%
Virgin Islands (British)	2	0.04%
Yemen	3	0.06%
Zimbabwe	2	0.04%
<b>GRAND TOTAL</b>	<b>5401</b>	
<b>Total Countries</b>	<b>138</b>	

## Number of International Students Per Country (Numerical Order)

Country	# Per	%
India	1408	26.07%
Viet Nam	521	9.65%
Brazil	397	7.35%
Bangladesh	234	4.33%
China	208	3.85%
Colombia	156	2.89%
Venezuela	139	2.57%
Pakistan	112	2.07%
Jamaica	110	2.04%
Egypt	104	1.93%
Trinidad and Tobago	102	1.89%
Nigeria	85	1.57%
Peru	83	1.54%
Uzbekistan	78	1.44%
Canada	70	1.30%
Nepal	68	1.26%
Saudi Arabia	62	1.15%
Kazakhstan	58	1.07%
Russia	58	1.07%
Iran	57	1.06%
South Korea	57	1.06%
Spain	56	1.04%
Azerbaijan	50	0.93%
Turkey	50	0.93%
Mexico	43	0.80%
Honduras	40	0.74%
Bolivia	38	0.70%
Ghana	38	0.70%
United Kingdom	38	0.70%
Ukraine	37	0.69%
Bahamas	35	0.65%
Kuwait	35	0.65%
Italy	34	0.63%
Panama	31	0.57%
Japan	30	0.56%

Kyrgyzstan	29	0.54%
Oman	28	0.52%
France	27	0.50%
Germany	26	0.48%
Sri Lanka	25	0.46%
Haiti	23	0.43%
Taiwan	23	0.43%
Cayman Islands	22	0.41%
Thailand	21	0.39%
Barbados	20	0.37%
Ecuador	20	0.37%
Argentina	18	0.33%
Belize	18	0.33%
Myanmar	14	0.26%
Albania	13	0.24%
Philippines	13	0.24%
Chile	12	0.22%
Jordan	12	0.22%
South Africa	12	0.22%
Costa Rica	11	0.20%
Kenya	11	0.20%
Ethiopia	10	0.19%
Serbia	10	0.19%
Australia	9	0.17%
Lebanon	9	0.17%
Netherlands	9	0.17%
Belarus	8	0.15%
Nicaragua	8	0.15%
El Salvador	7	0.13%
Morocco	7	0.13%
Sweden	7	0.13%
Cambodia	6	0.11%
Dominica	6	0.11%
Guatemala	6	0.11%
Malaysia	6	0.11%
Congo (Kinshasa)	5	0.09%

Denmark	5	0.09%
Greece	5	0.09%
Indonesia	5	0.09%
Palestine	5	0.09%
Poland	5	0.09%
Portugal	5	0.09%
Cameroon	4	0.07%
Georgia	4	0.07%
Norway	4	0.07%
Saint Kitts and Nevis	4	0.07%
Switzerland	4	0.07%
Syria	4	0.07%
Uruguay	4	0.07%
Angola	3	0.06%
Aruba	3	0.06%
Austria	3	0.06%
Bahrain	3	0.06%
Belgium	3	0.06%
Bermuda	3	0.06%
Bosnia & Herzegovina	3	0.06%
Dominican Republic	3	0.06%
Hungary	3	0.06%
Iceland	3	0.06%
Iraq	3	0.06%
Israel	3	0.06%
Malawi	3	0.06%
Moldova	3	0.06%
Paraguay	3	0.06%
Saint Lucia	3	0.06%
Sudan	3	0.06%
Uganda	3	0.06%
Yemen	3	0.06%
Antigua and Barbuda	2	0.04%
Bulgaria	2	0.04%
Burkina Faso	2	0.04%
Cuba	2	0.04%

Czech Republic	2	0.04%
Guyana	2	0.04%
Hong Kong	2	0.04%
Ivory Coast	2	0.04%
Libya	2	0.04%
Mali	2	0.04%
Romania	2	0.04%
Rwanda	2	0.04%
Singapore	2	0.04%
Tanzania	2	0.04%
Turkmenistan	2	0.04%
United Arab Emirates	2	0.04%
Virgin Islands (British)	2	0.04%
Zimbabwe	2	0.04%
Algeria	1	0.02%
Armenia	1	0.02%
Congo (Brazzaville)	1	0.02%
Croatia	1	0.02%
Cyprus	1	0.02%
Finland	1	0.02%
Ireland	1	0.02%
Latvia	1	0.02%
Lithuania	1	0.02%
Macau	1	0.02%
Madagascar	1	0.02%
Papua New Guinea	1	0.02%
Qatar	1	0.02%
Sint Maarten	1	0.02%
Slovakia	1	0.02%
Slovenia	1	0.02%
Tunisia	1	0.02%
GRAND TOTAL	5401	
Total Countries	138	